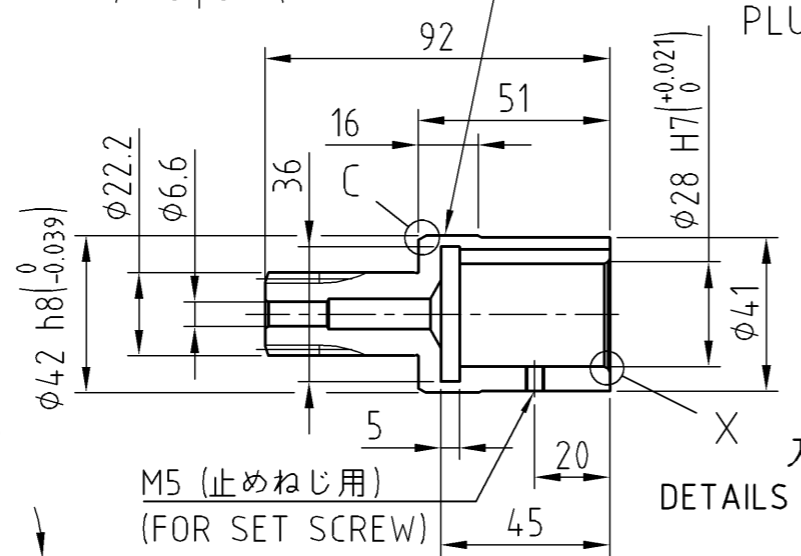
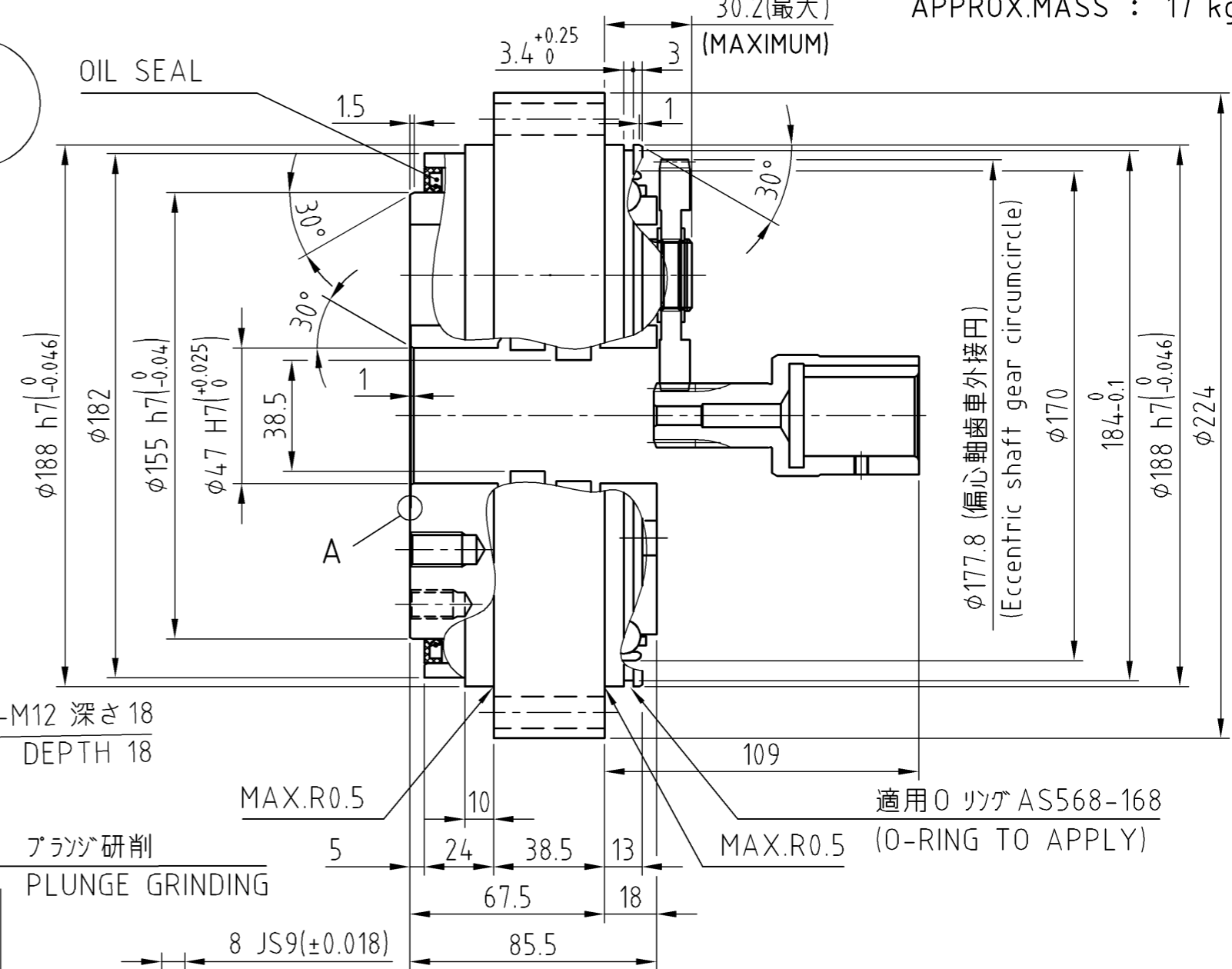
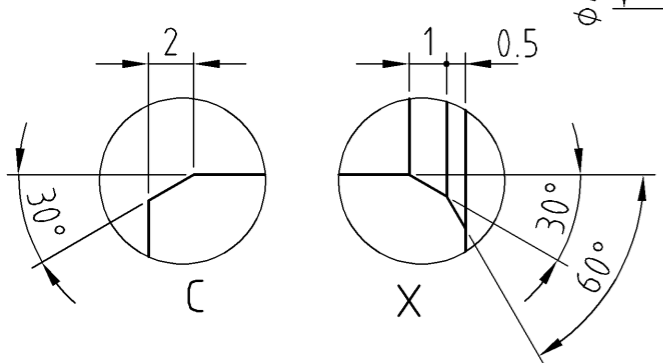
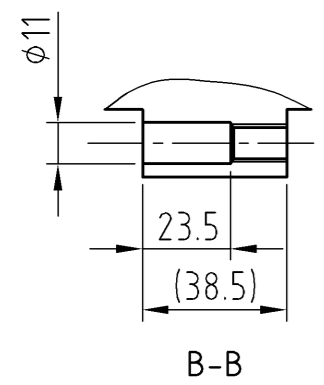
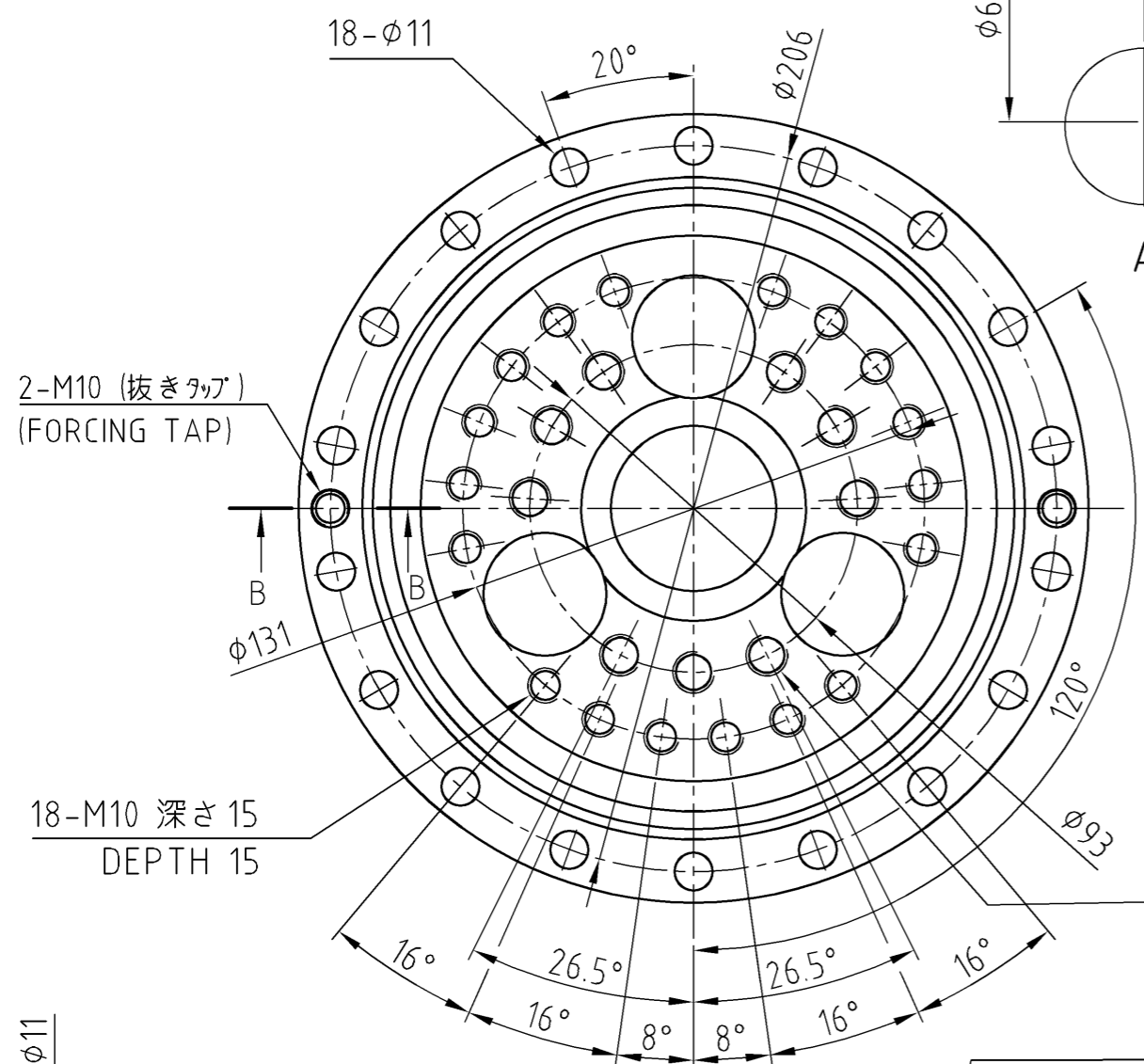


□78L60□

質量
APPROX.MASS : 17 kg



注意事項：
取付用のボルト、座金、液状パッキン、
Oリング及び潤滑用グリースは、お客様にて御用意下さい。

Precautions：
Prepare bolts for mounting, washers,
liquid gasket, O-ring, and grease for lubrication by customers.

CUSTOMER I	WORK.NO. I	ITEM.NO. I	USE I ORDER NO.	Q'TY I	SET	SHI MANUF.NO.
X04501G_01		SCALE	DATE Apr.13.2023	F4CF -UA45-152		
		INSP. Y.Miura	APPR. Y.Tsurumi Y.Tsurumi	CYCLO DRIVE		
				OUTLINE DRAWING		
REV.		Sumitomo Drive Technologies Sumitomo Heavy Industries, Ltd.		DWG. NO.	F Q 9 7 8 4 I G I	