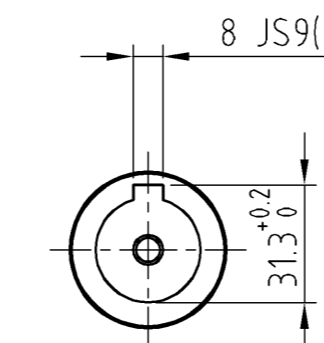
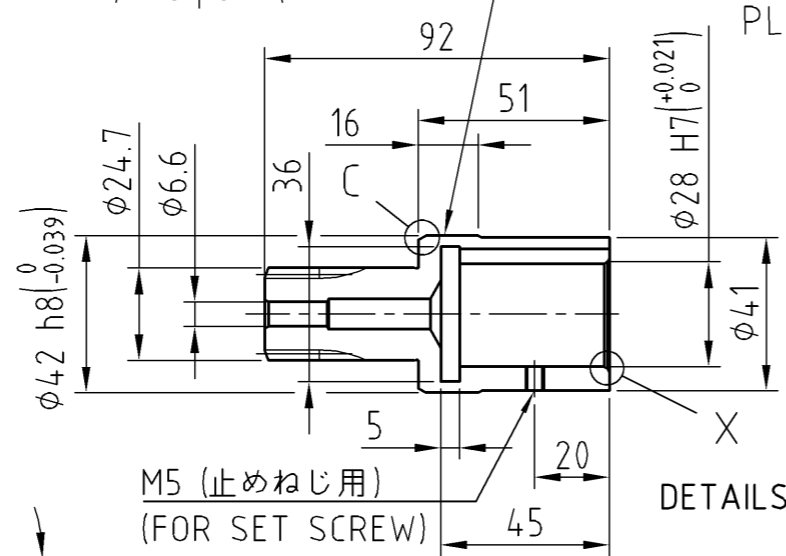
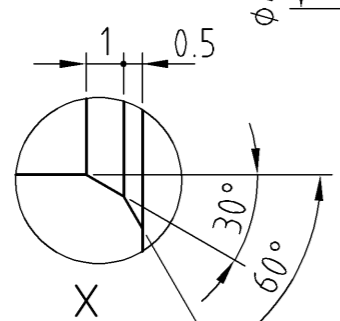
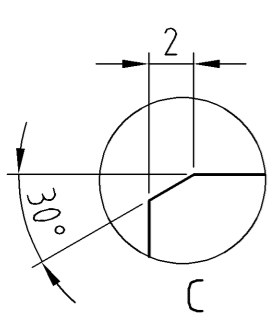
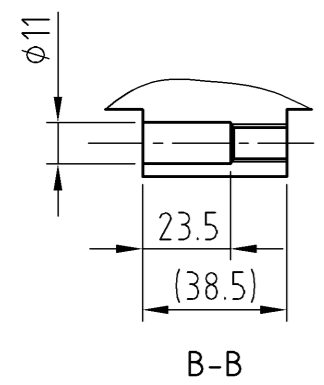
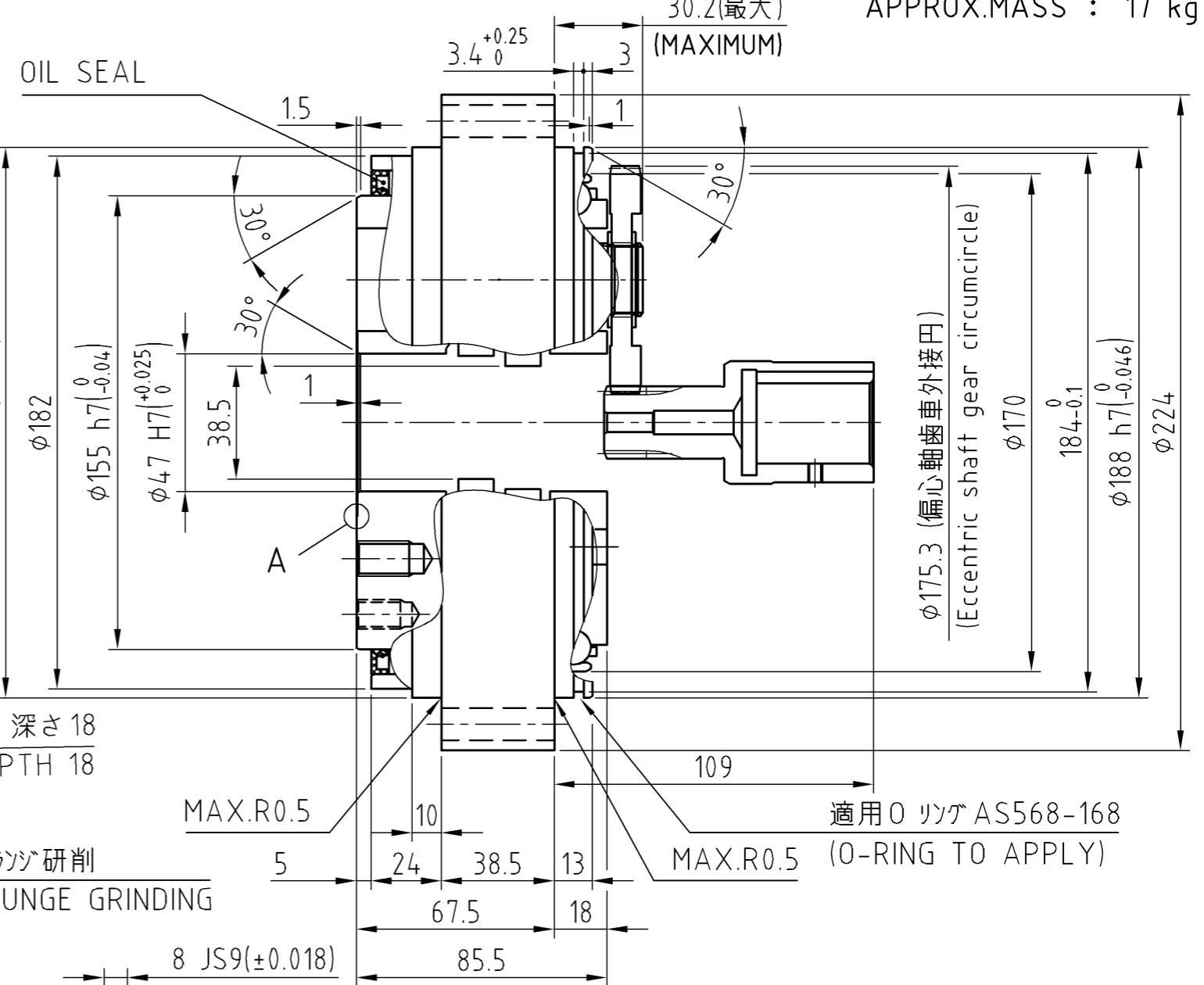
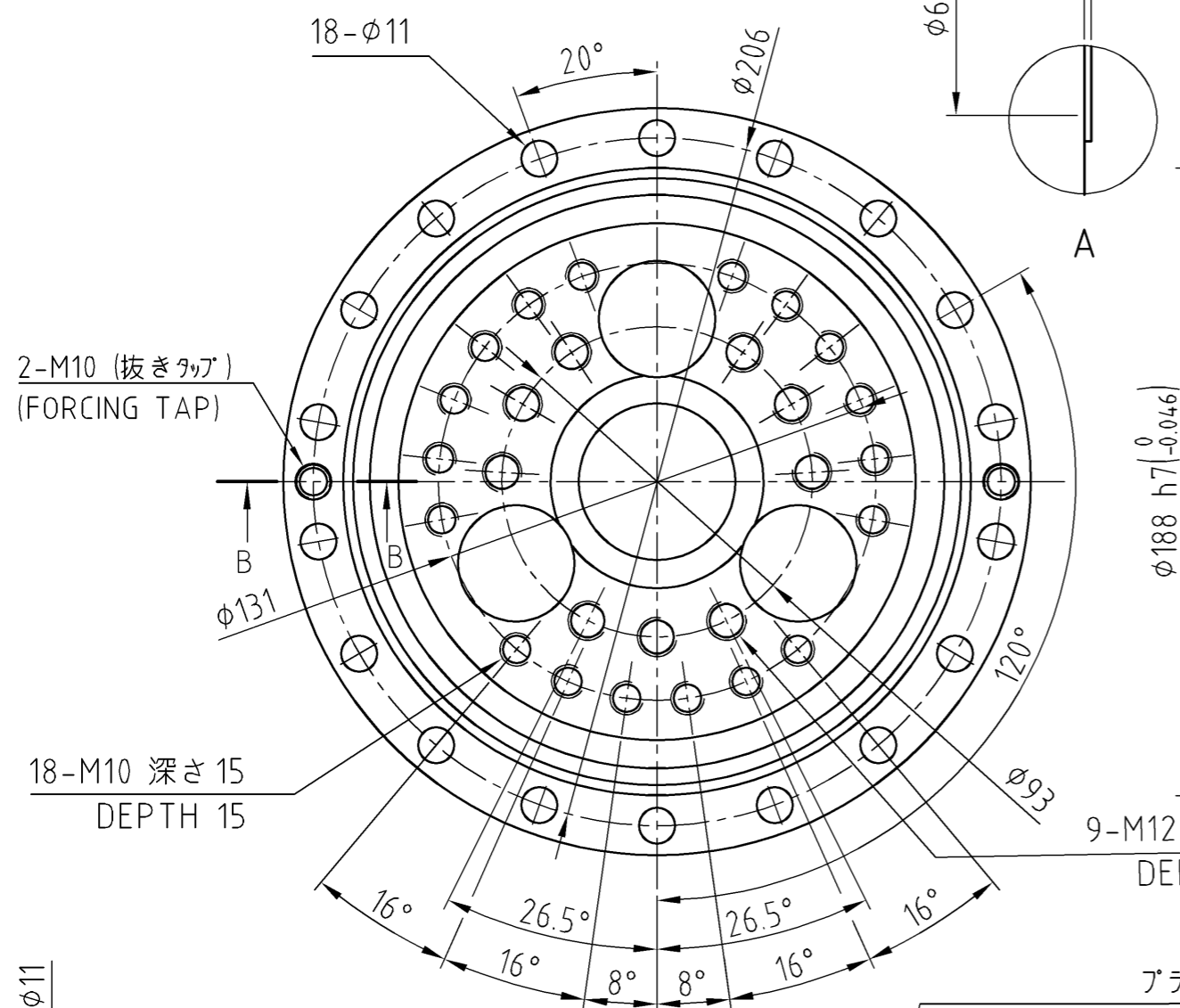


DE8760F

質量
APPROX.MASS : 17 kg



入力軸歯車詳細
DETAILS ON INPUT SHAFT GEAR

注意事項：
取付用のボルト、座金、液状パッキン、
Oリング及び潤滑用グリースは、お客様にて御用意下さい。

Precautions：
Prepare bolts for mounting, washers,
liquid gasket, O-ring, and grease for lubrication by customers.

CUSTOMER I	WORK.NO. I	ITEM.NO. I	USE I ORDER NO.	Q'TY I	SET	SHI MANUF.NO.
X04501G_01		SCALE	DATE Apr.13.2023			F4CF -UA45-130
		Y.Miura	INSPE. Y.Tsurumi			CYCLO DRIVE
			APPR. Y.Tsurumi			OUTLINE DRAWING
REV.		Sumitomo Drive Technologies	Sumitomo Heavy Industries, Ltd.			DWG. NO. F Q 9 7 8 3 G