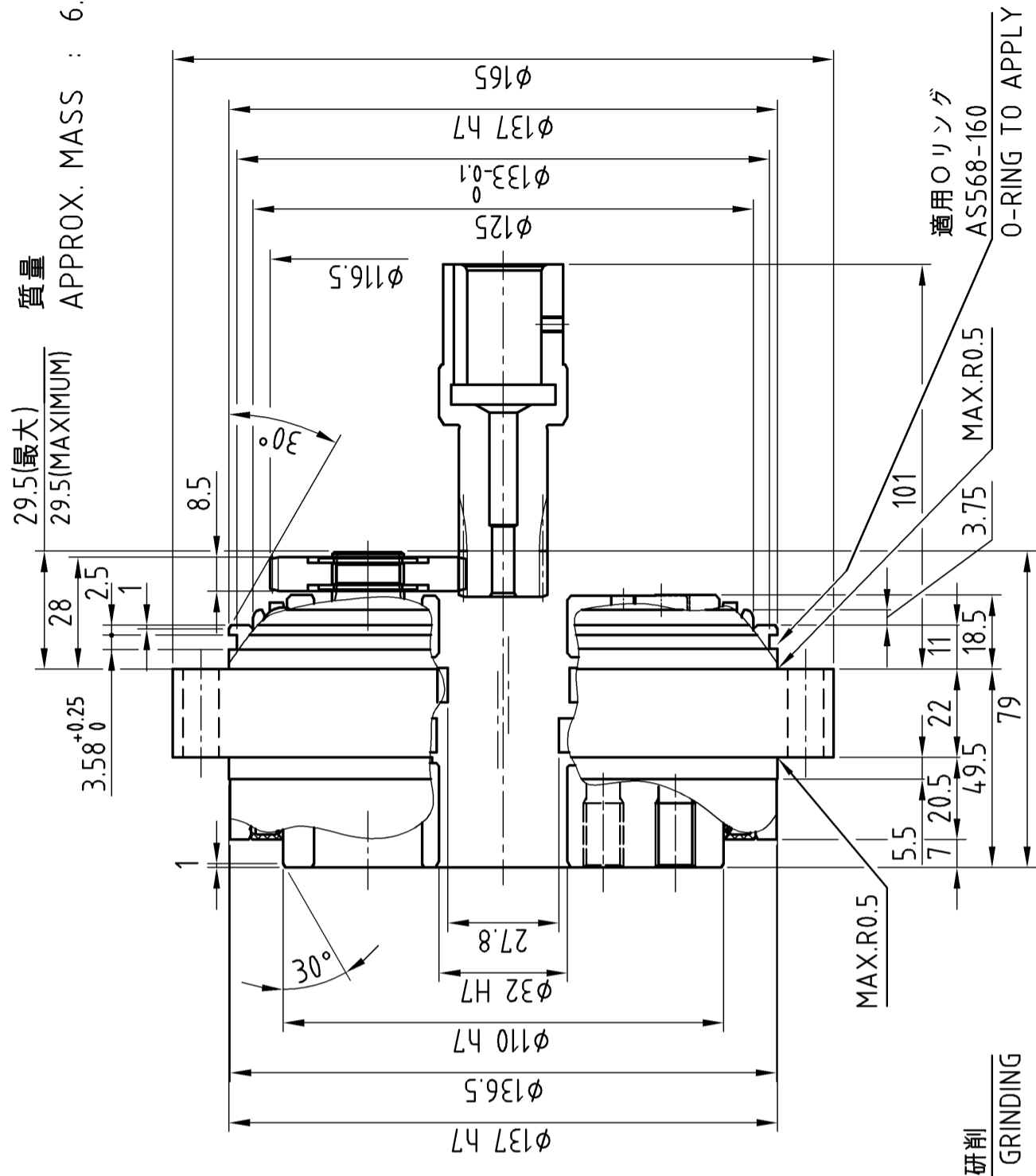


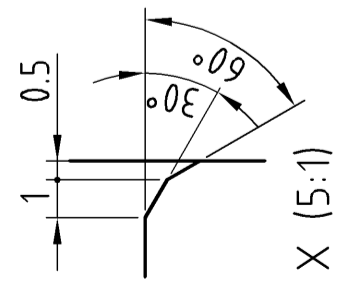
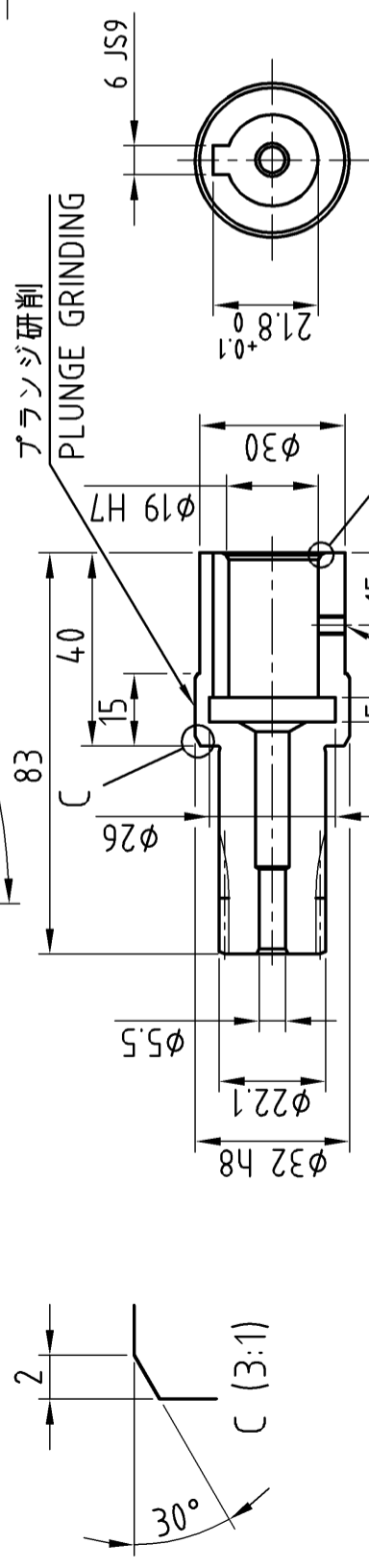
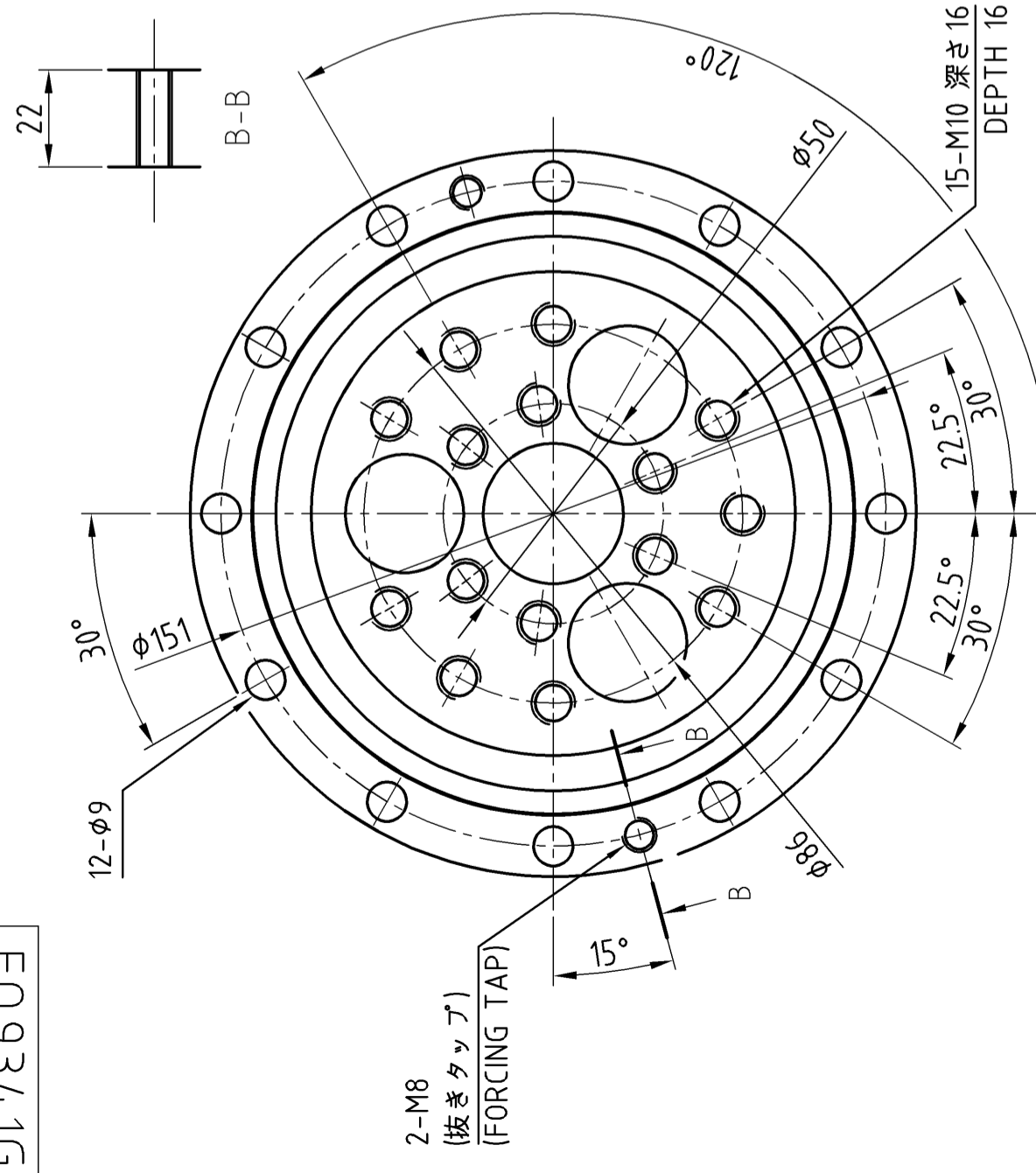
FD17E60H

質量
APPROX. MASS : 6.2 kg



注意事項：
取付用のボルト、座金、液状パッキン、Oリング及び潤滑用グリースはお客様にて御用意下さい。

Precautions:
Prepare bolts for mounting, washers, liquid gasket, O-ring, and grease for lubrication by customers.



入力軸歯車詳細
DETAILS ON THE INPUT SHAFT GEAR

CUSTOMER	WORK.NO.	ITEM.NO.	USE ORDER NO.	Q'TY	SET	SHI MANUF.NO.
X04499G						
SCALE	1:1.5(3:1,5:1)	DATE	Mar.8.2019	F4CF -UA25-88		
INSPEC.	Y.Miura	APPR.	Y.Mase	CYCLO DRIVE		
REV.			M.Nakaoka	OUTLINE DRAWING		
Sumitomo Drive Technologies ◆ Sumitomo Heavy Industries, Ltd.						
DWG. NO. IFQ9341GI						