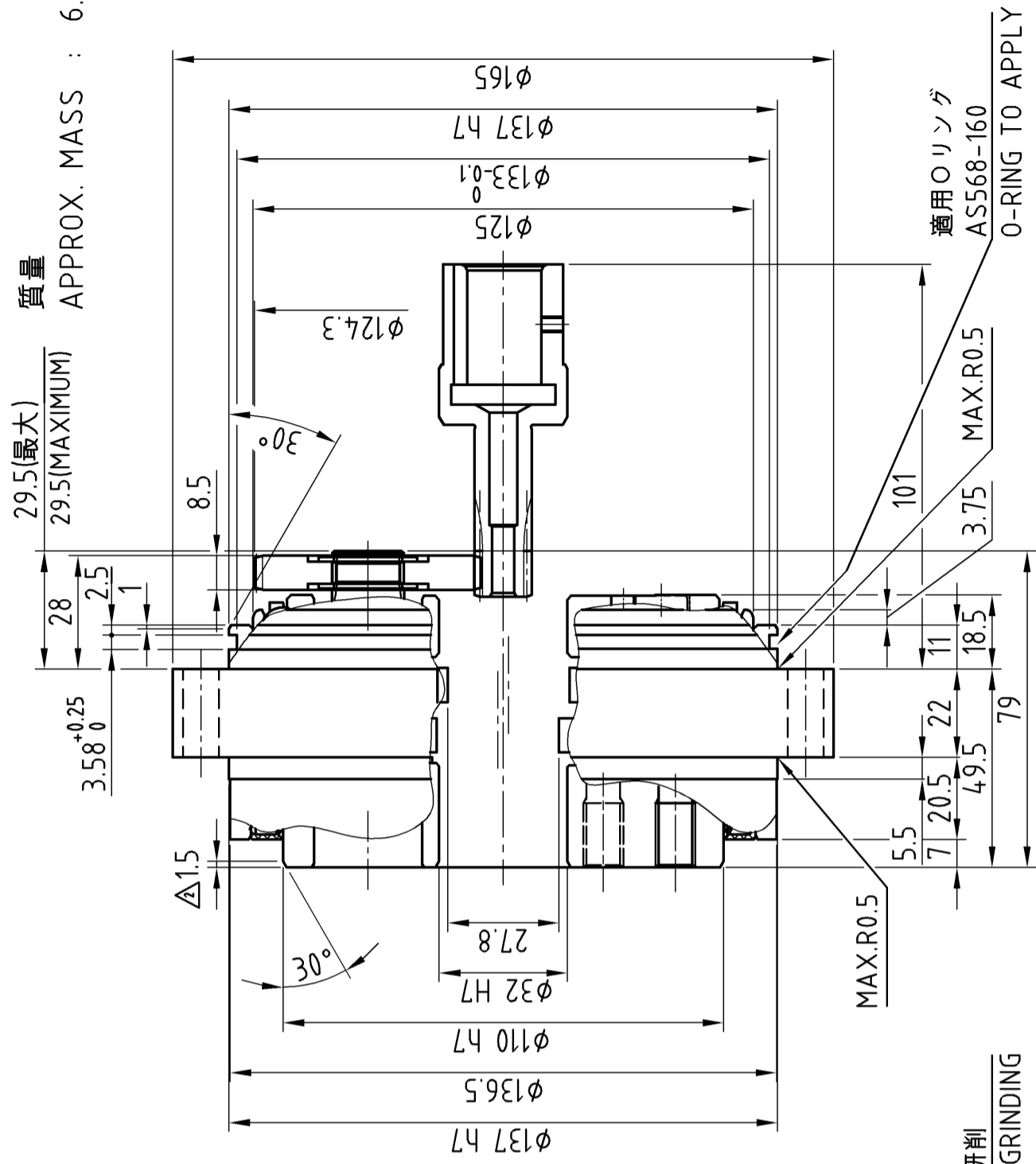


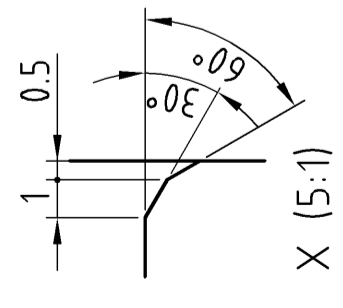
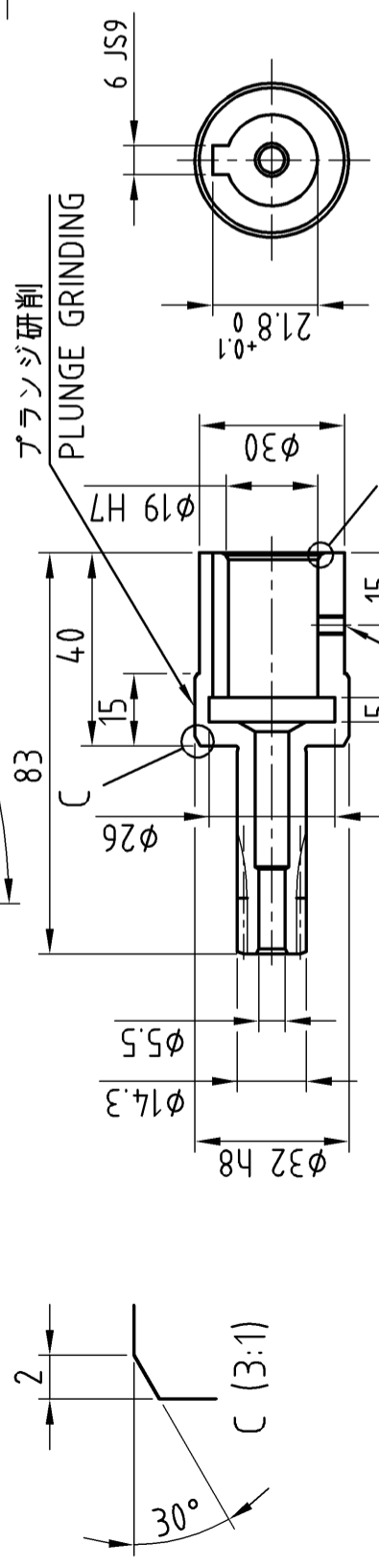
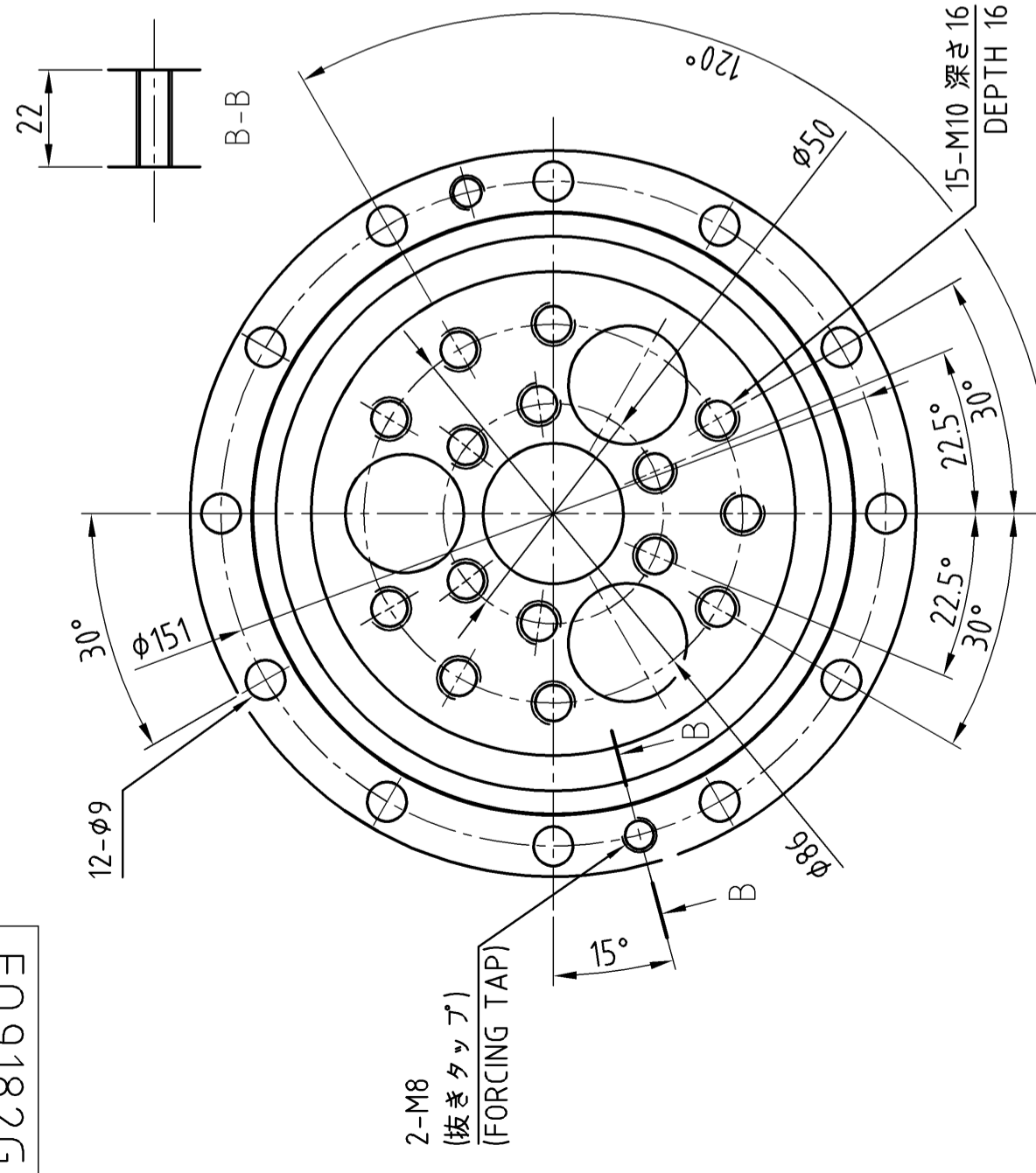
GZ8160F

質量
APPROX. MASS : 6.2 kg



注意事項：
取付用のボルト、座金、液状パッキン、Oリング及び潤滑用グリースはお客様にて御用意下さい。

Precautions:
Prepare bolts for mounting, washers, liquid gasket, O-ring, and grease for lubrication by customers.



入力軸歯車詳細
DETAILS ON THE INPUT SHAFT GEAR

CUSTOMER	WORK.NO.	ITEM.NO.	USE ORDER NO.	Q'TY	SET	SHI MANUF.NO.
X04499G						
SCALE	DATE	INSP.	APPR.	F4CF -UA25-173		
1:1.5(3:1,5:1)	Dec.7.2017			CYCLO DRIVE		
Y.Miura	R.Tsukamoto	I.Norimura	M.Nakaoka	OUTLINE DRAWING		
2 Correction of errors	Feb.03.2020 H.Endo	DWG. NO. IFQ9182G				
REV.1 REWRITE DRAWING	Sep.4.2019 Y.Kurosu	Sumitomo Drive Technologies Sumitomo Heavy Industries, Ltd.				