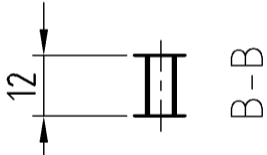
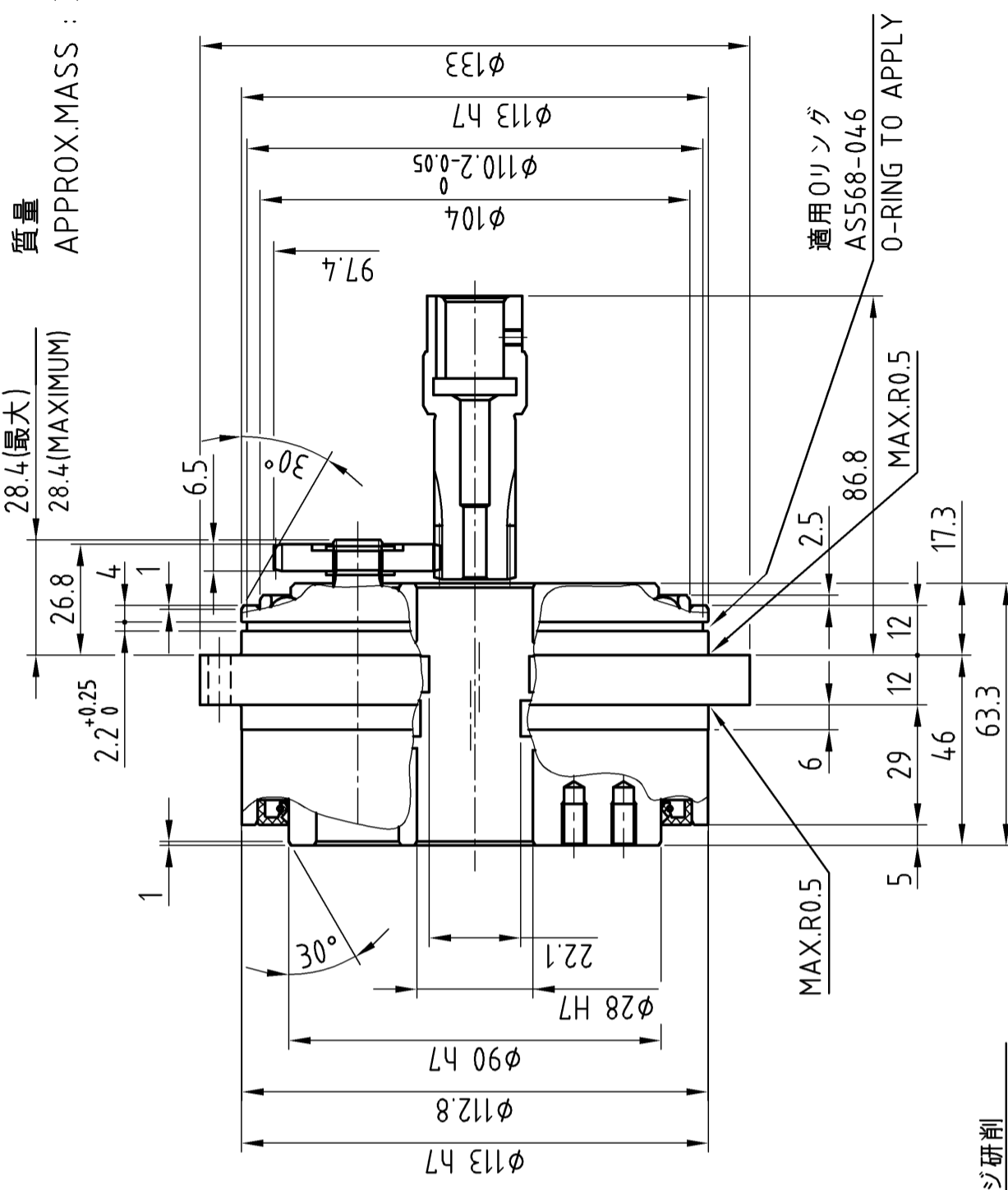


D58680F

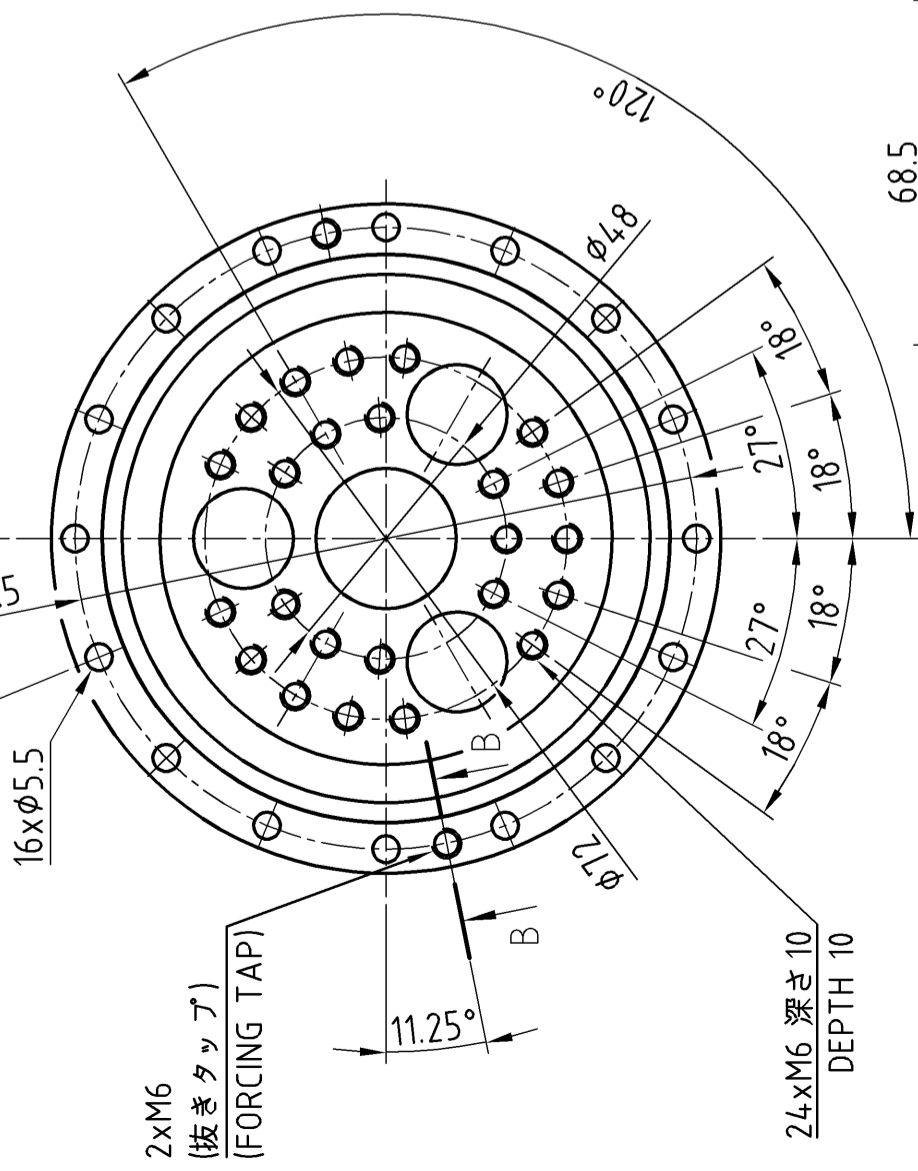


質量
APPROX.MASS : 3.9 kg

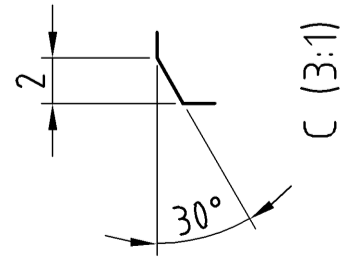
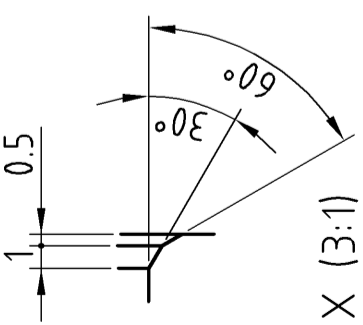
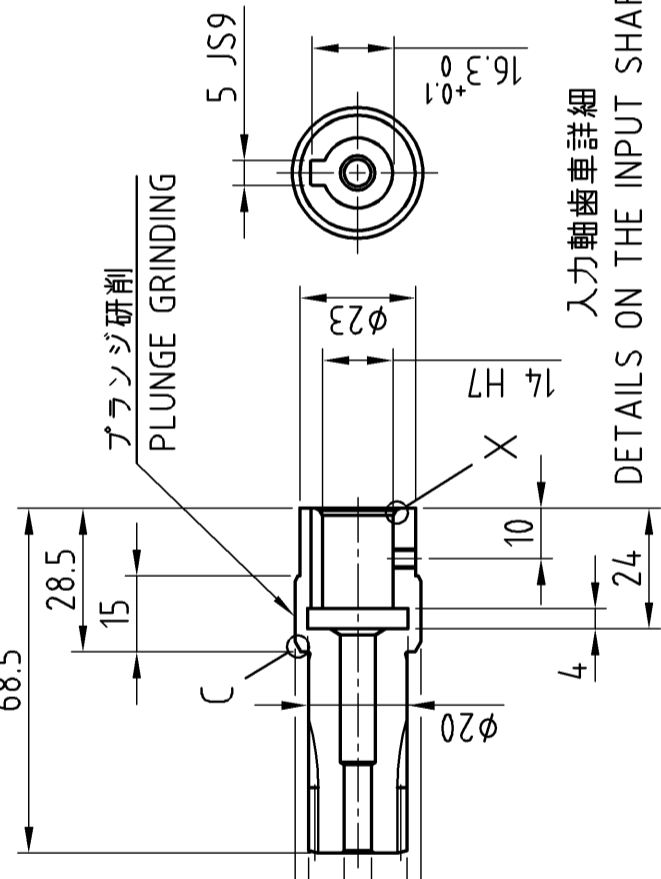


注意事項：
取付用のボルト、座金、液状パッキン、Oリング及び潤滑用グリースはお客様にて御用意下さい。

Precautions:
Prepare bolts for mounting, washers, liquid gasket, O-ring, and grease for lubrication by customers.



プランジ研削
PLUNGE GRINDING



入力軸歯車詳細

DETAILS ON THE INPUT SHAFT GEAR

CUSTOMER	WORK.NO.1	ITEM.NO.1	USE ORDER NO.	Q'TY SET	SHI MANUF.NO.
SCALE	1:1.5(3:1)	DATE	Mar.30.2017	F4CF -UA15-84	
		INS.P.	Y.Kurosu	CYCLO DRIVE	
	P.Kien	APPR.	Y.Kurosu T.Ishikawa	OUTLINE DRAWING	
REV.2	Nov.28.2018	Y.Kurosu		DWG. NO. F Q 8 9 8 5 G I	
Rewrite drawing				Sumitomo Drive Technologies Sumitomo Heavy Industries, Ltd.	