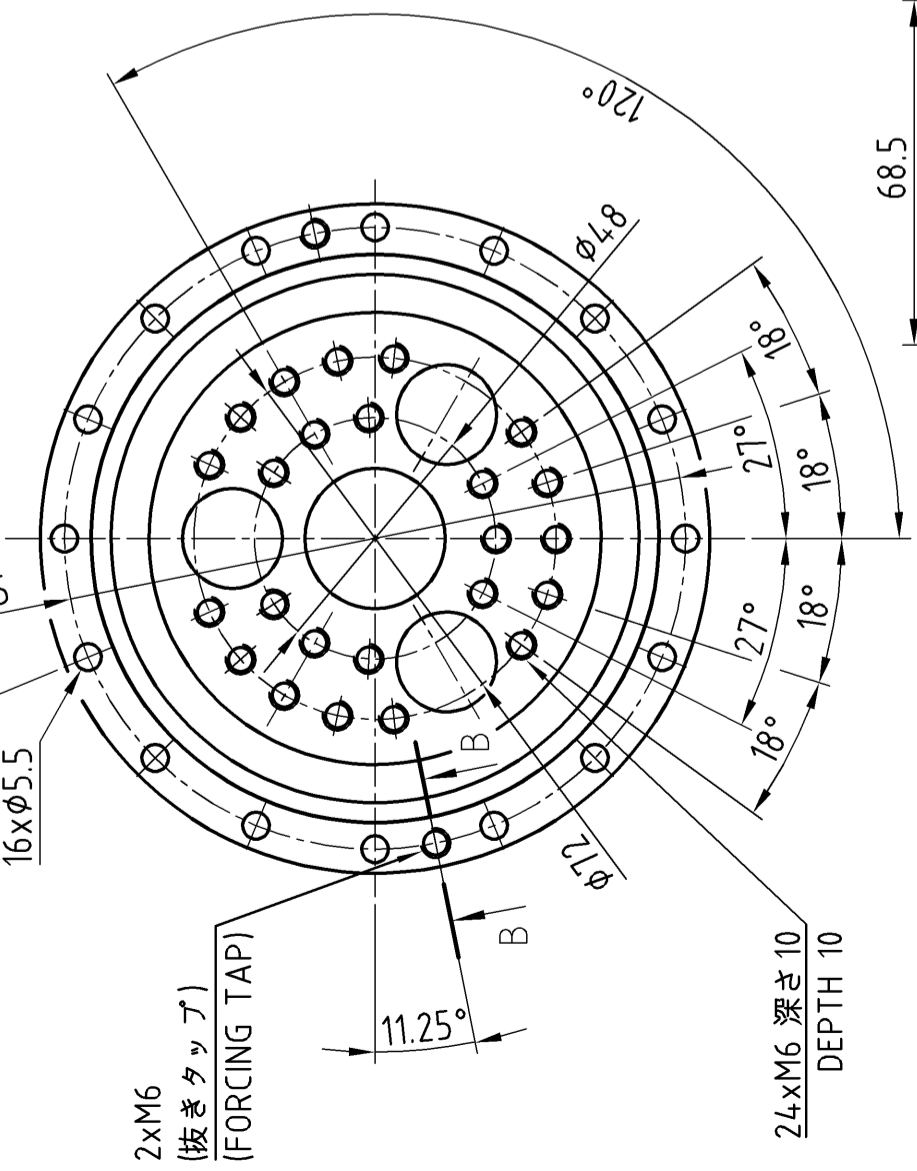
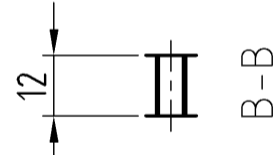


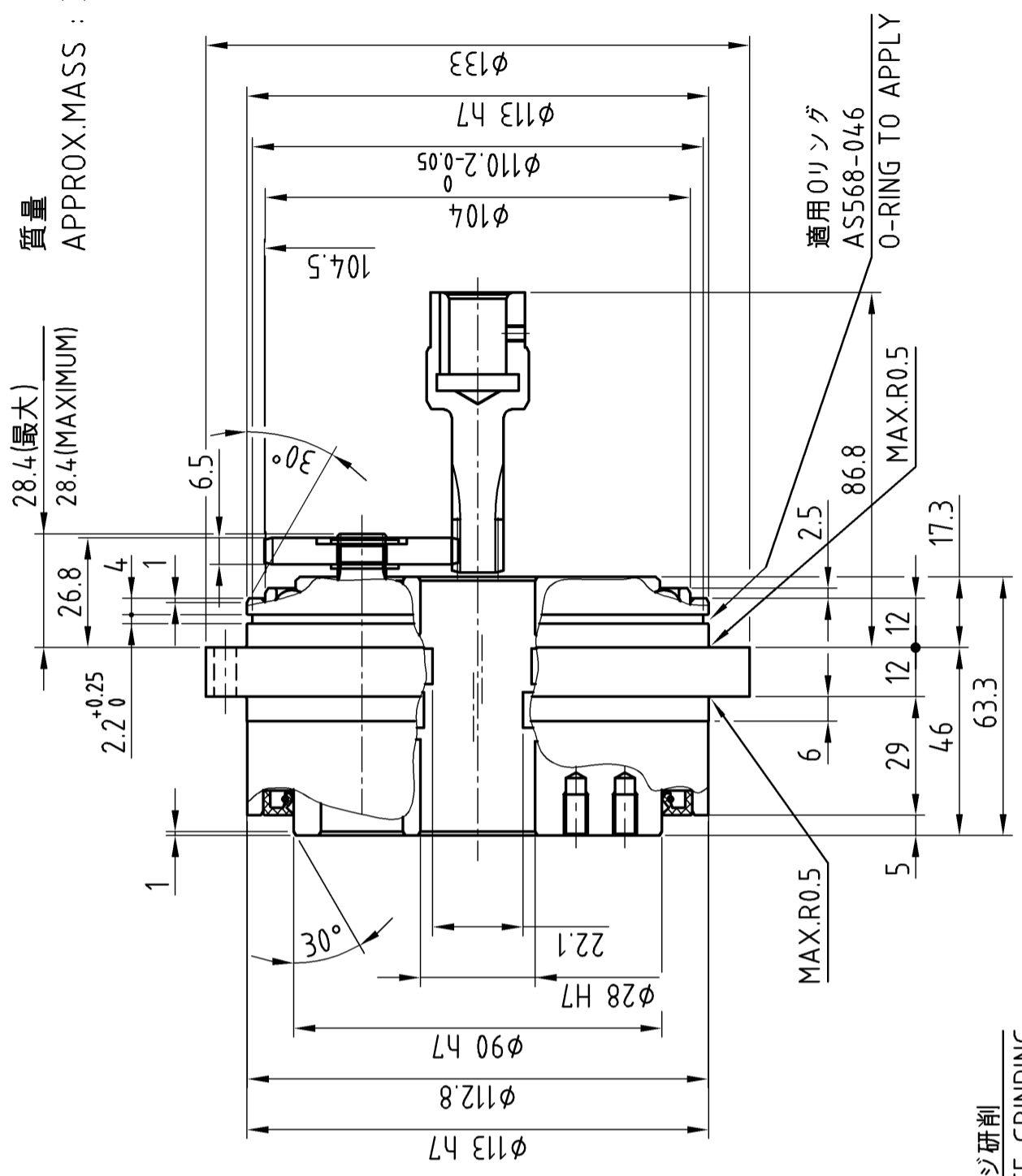
D98680F

質量  
APPROX.MASS : 3.9 kg

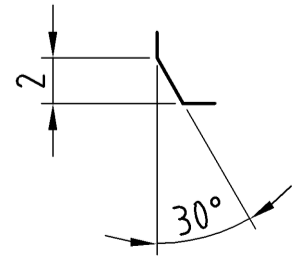


2xM6  
(抜きタップ)  
(FORCING TAP)

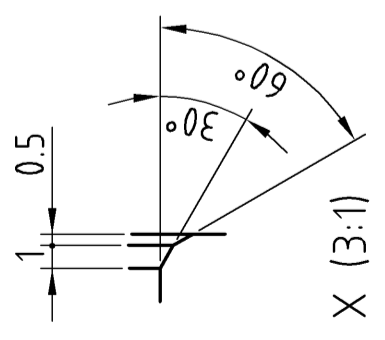
24xM6 深さ10  
DEPTH 10



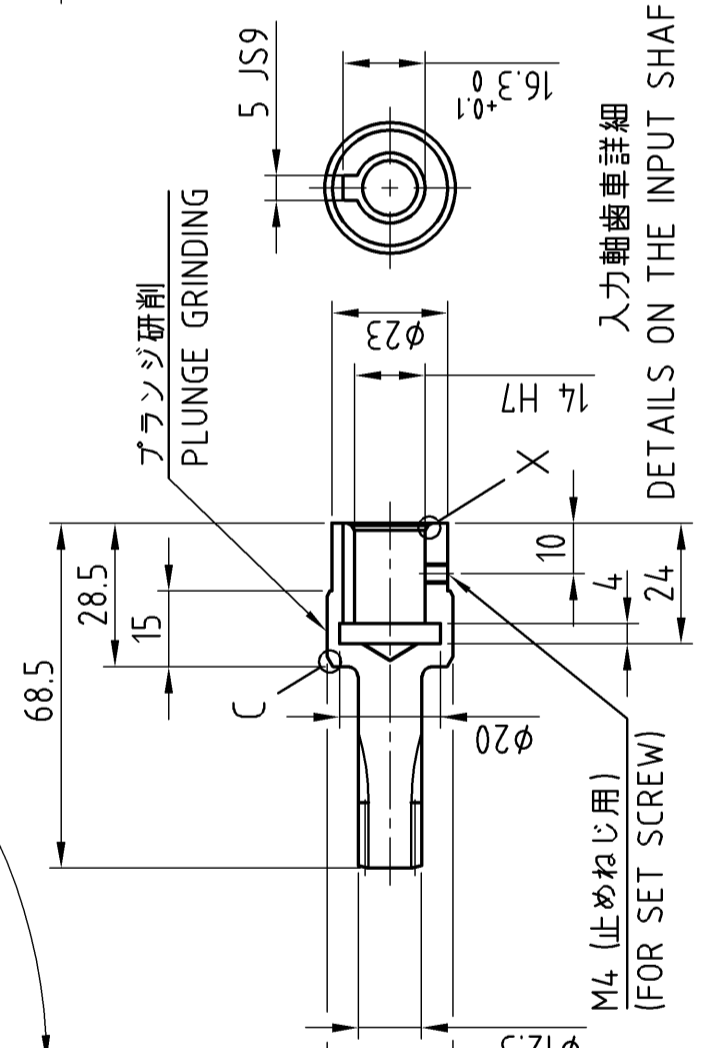
適用Oリング  
AS568-046  
O-RING TO APPLY



C (3:1)



X (3:1)



入力軸歯車詳細  
DETAILS ON THE INPUT SHAFT GEAR

注意事項：  
取付用のボルト、座金、液状パッキン、Oリング及び潤滑用グリースは  
お客様にて御用意下さい。

Precautions:  
Prepare bolts for mounting, washers, liquid gasket, O-ring,  
and grease for lubrication by customers.

CUSTOMER	WORK.NO.	ITEM.NO.	USE ORDER NO.	Q'TY	SET	SHI MANUF.NO.
SCALE	1:1.5(3:1)	DATE	Mar.30.2017	F4CF -UA15-171		
		INSP.		CYCLO DRIVE		
	P.Kien	APPR.	Y.Kurosu T.Ishikawa	OUTLINE DRAWING		
REV.	2	Nov.28.2018	Y.Kurosu	DWG. NO.		
	Rewrite drawing			F Q 8 9 8 6 G I		
				Sumitomo Drive Technologies Sumitomo Heavy Industries, Ltd.		