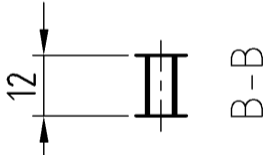
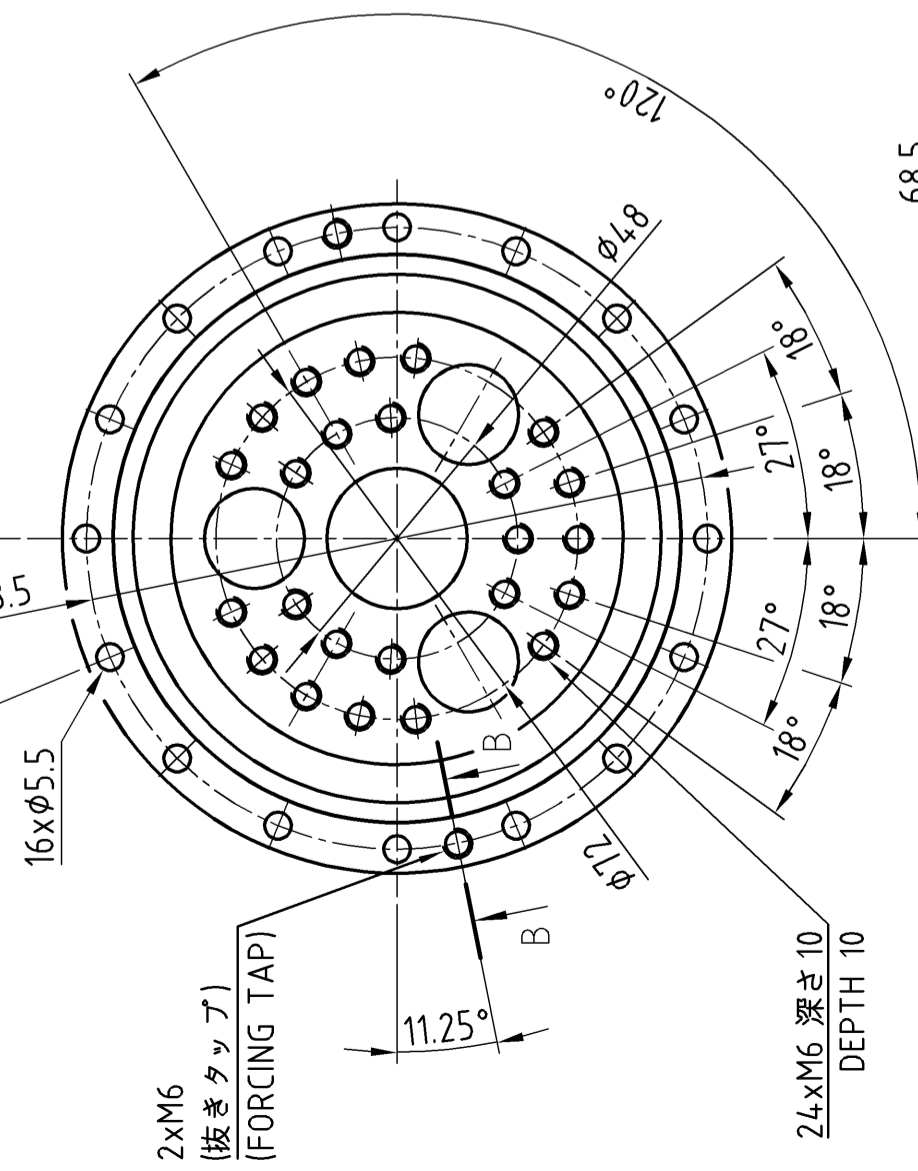


F97060F

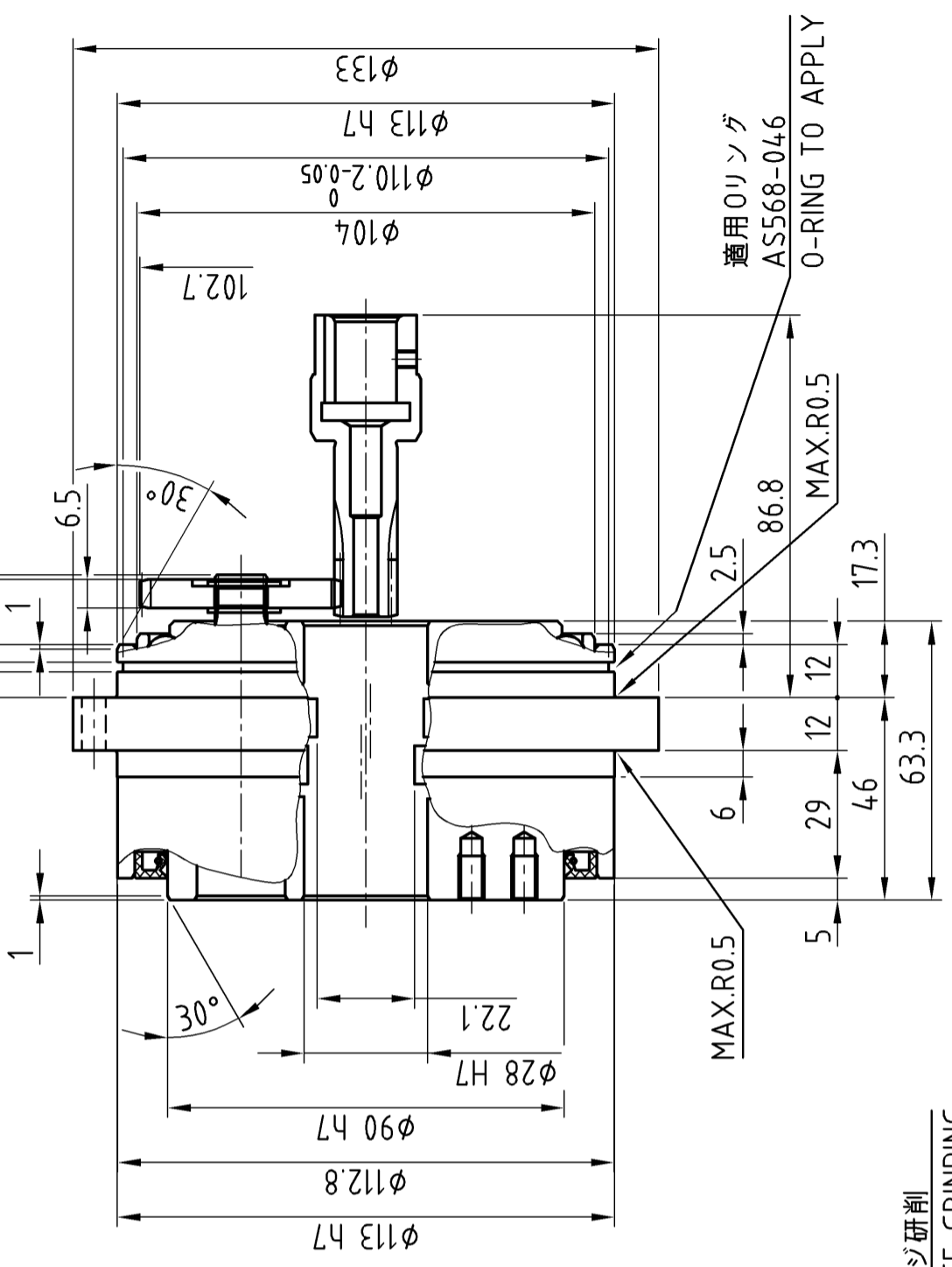


質量  
APPROX.MASS : 3.9 kg



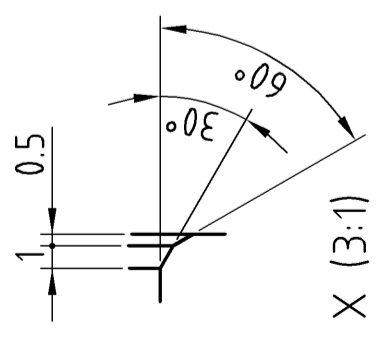
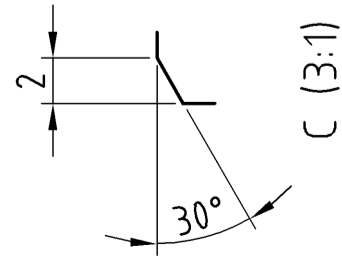
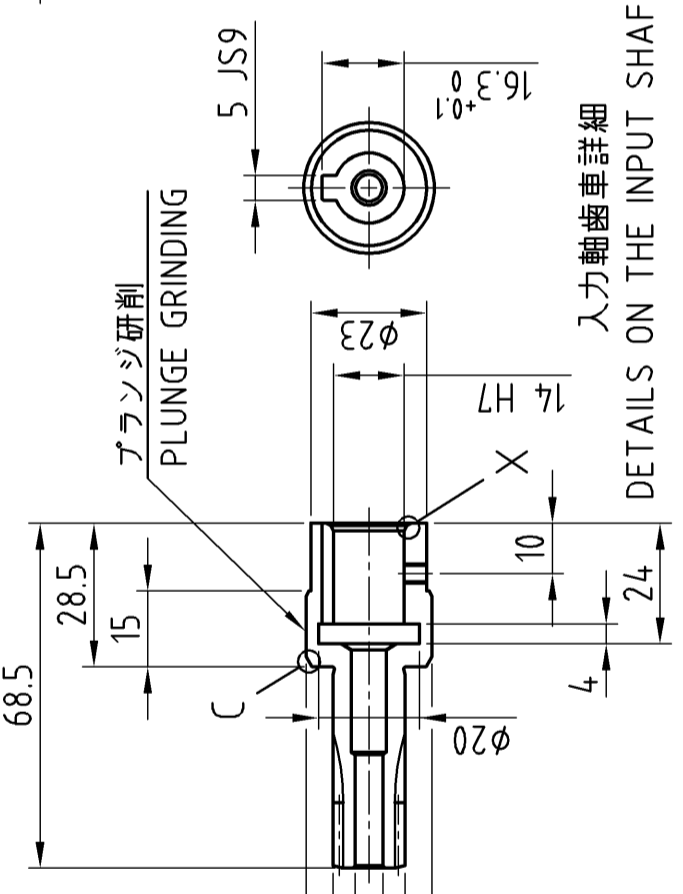
2xM6  
(抜きタップ)  
(FORCING TAP)

24xM6 深さ10  
DEPTH 10



適用Oリング  
AS568-046  
O-RING TO APPLY

プランジ研削  
PLUNGE GRINDING



注意事項：  
取付用のボルト、座金、液状パッキン、Oリング及び潤滑用グリースは  
お客様にて御用意下さい。

Precautions:  
Prepare bolts for mounting, washers, liquid gasket, O-ring,  
and grease for lubrication by customers.

入力軸歯車詳細  
DETAILS ON THE INPUT SHAFT GEAR

CUSTOMER	WORK.NO.	ITEM.NO.	USE   ORDER NO.	Q'TY	SET	SHI MANUF.NO.
SCALE	1:1.5(3:1)	DATE	Jul.5.2017	F4CF -UA15-139		
INSP.		APPR.		CYCLO DRIVE		
	W.Nagamizo		Y.Kurosu	T.Ishikawa		
				OUTLINE DRAWING		
REV.1	Rewrite drawing	Nov.28.2018	Y.Kurosu	DWG. NO. FQ9076G		
				Sumitomo Drive Technologies Sumitomo Heavy Industries, Ltd.		