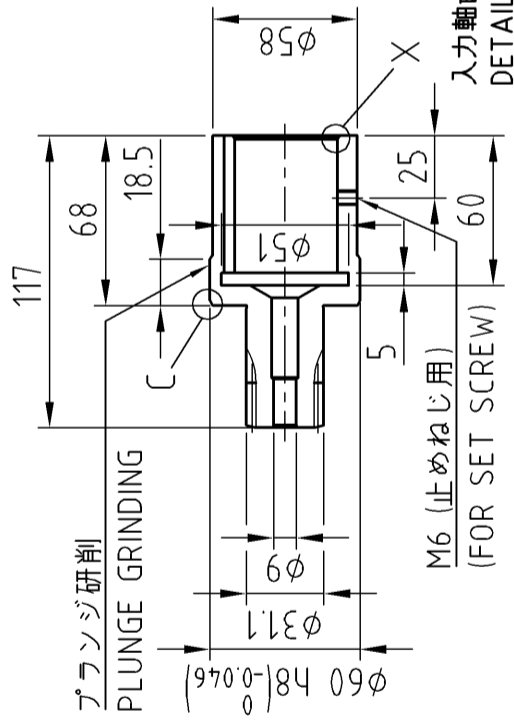
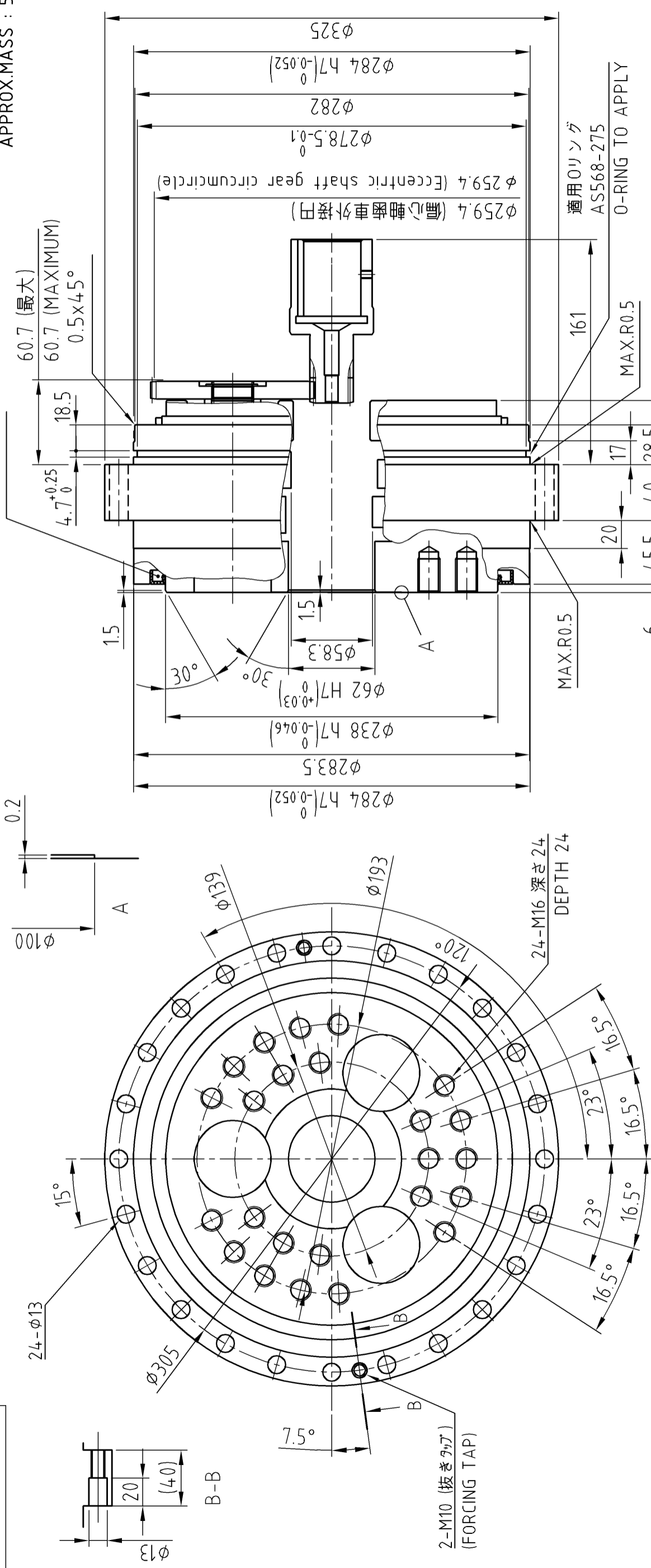


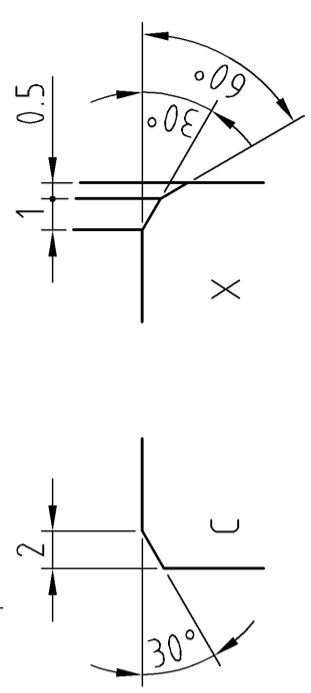
DZ5L60F

質量
APPROX.MASS : 56 kg



注意事項：
取付用のボルト、座金、液状パッキン、
Oリング及び潤滑用グリースは
お客様にて御用意下さい。

Precautions:
Prepare bolts for mounting, washers,
liquid gasket, O-ring, and grease
for lubrication by customers.



入力軸歯車詳細
DETAILS ON THE INPUT SHAFT GEAR

CUSTOMER	WORK.NO.	ITEM.NO.	USE ORDER NO.	Q'TY	SET	SHI MANUF.NO.
X04503G_01						
		SCALE	DATE	F2CF -UA80-239		
		Y.Miura	Dec.8.2022	CYCLO DRIVE		
		Y.Tsurumi	INSPECTION	OUTLINE DRAWING		
		Y.Tsurumi	APPROV.	DRAW. NO. IFQ9752IGI		
REV.				Sumitomo Drive Technologies ◆ Sumitomo Heavy Industries, Ltd.		