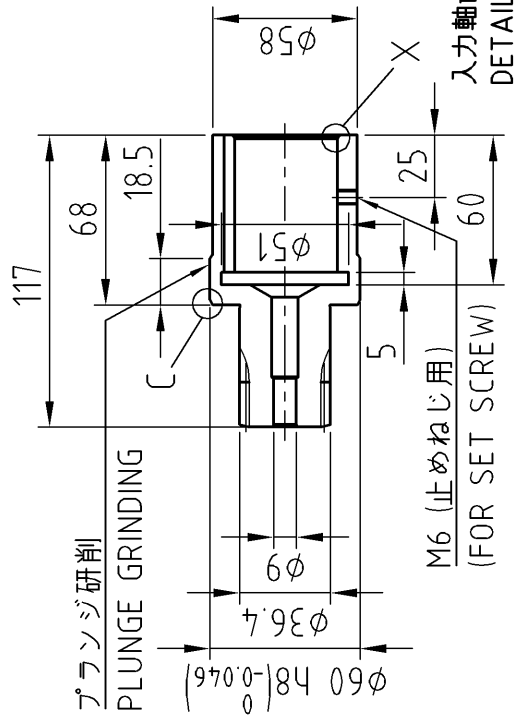
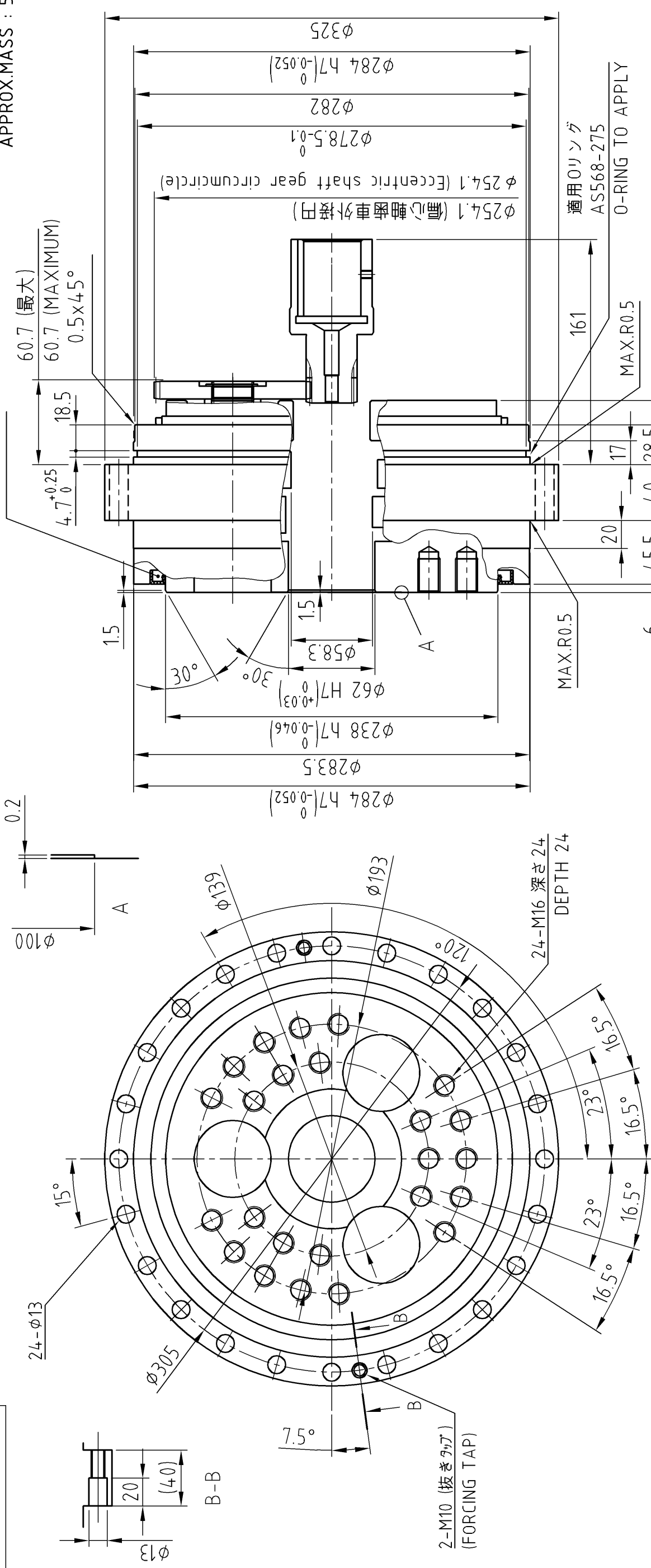


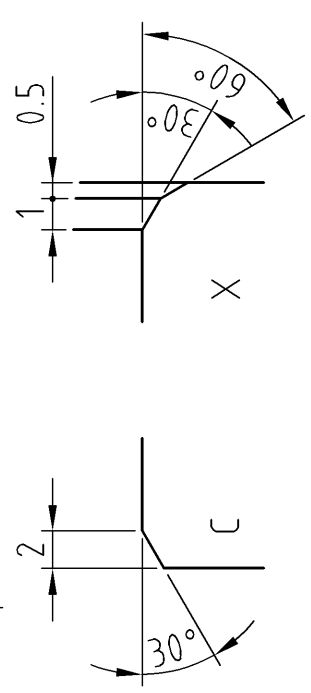
F09751

質量  
APPROX.MASS : 56 kg



注意事項：  
取付用のボルト、座金、液状パッキン、  
Oリング及び潤滑用グリースは  
お客様にて御用意下さい。

Precautions:  
Prepare bolts for mounting, washers,  
liquid gasket, O-ring, and grease  
for lubrication by customers.



入力軸歯車詳細  
DETAILS ON THE INPUT SHAFT GEAR

CUSTOMER	WORK.NO.	ITEM.NO.	USE ORDER NO.	Q'TY	SET	SHI MANUF.NO.
X04503G_01						
SCALE	DATE	INSPECTION	DATE	F2CF -UA80-190		
Y.Miura	Dec.8.2022	Y.Tsurumi	Dec.8.2022	CYCLO DRIVE		
		Y.Tsurumi		OUTLINE DRAWING		
REV.				DRAW. NO. F Q 9 7 5 1 G I		
				Sumitomo Drive Technologies Sumitomo Heavy Industries, Ltd.		