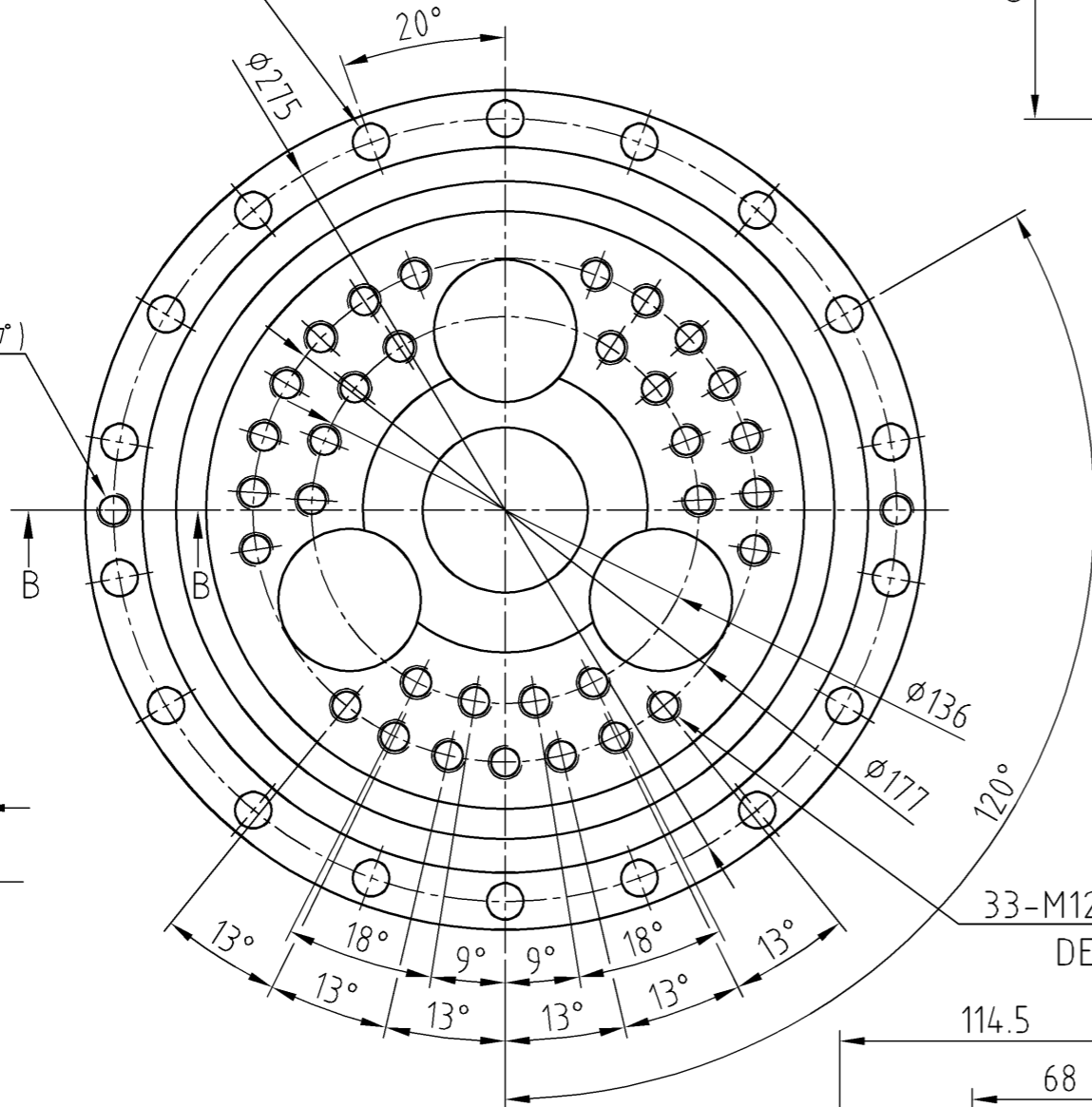
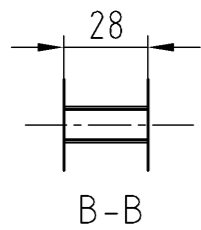


F09525G

18-φ13

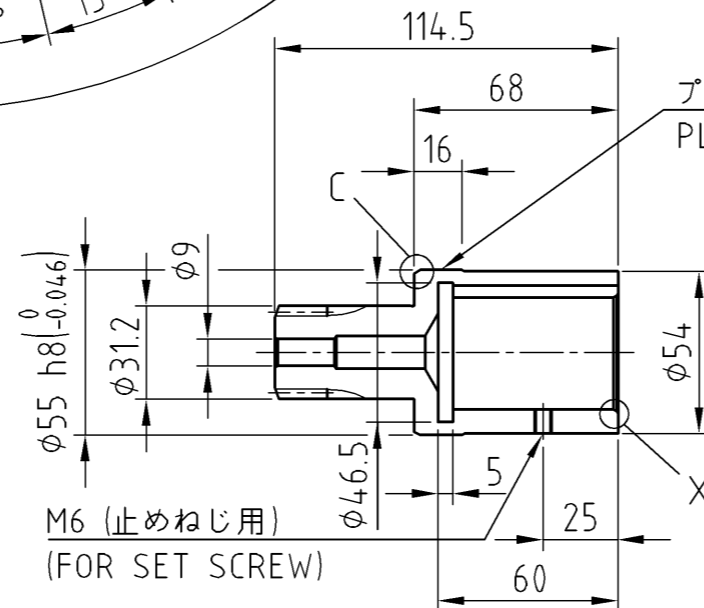
2-M12(抜きタップ)
(FORCING TAP)



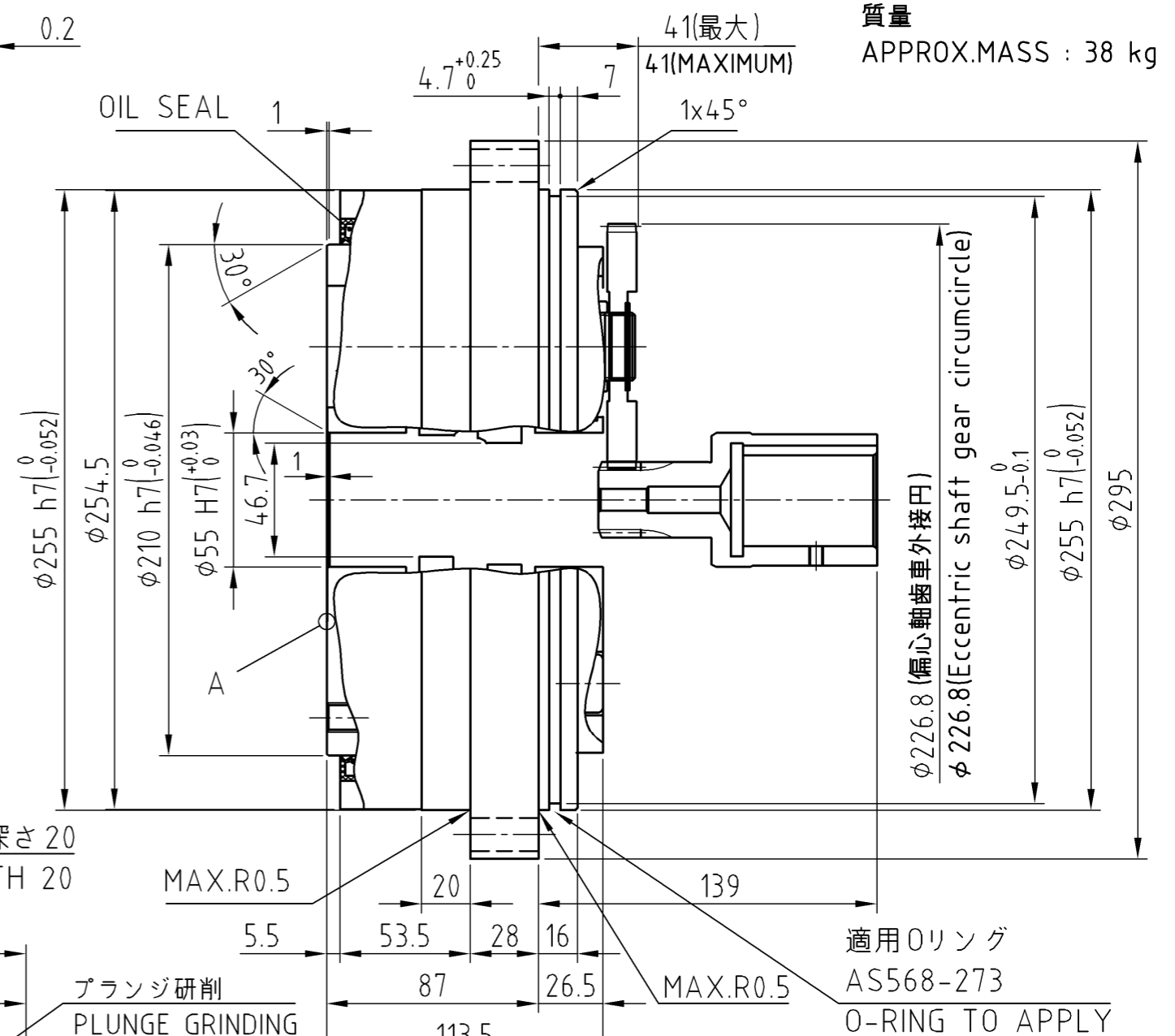
33-M12 深さ 20
DEPTH 20

注意事項：
取付用のボルト、座金、液状パッキン、Oリング及び潤滑用グリースは
お客様にて御用意下さい。

Precautions:
Prepare bolts for mounting, washers, liquid gasket, O-ring,
and grease for lubrication by customers.



入力軸歯車詳細
DETAILS ON THE INPUT SHAFT GEAR



質量
APPROX.MASS : 38 kg

適用Oリング
AS568-273
O-RING TO APPLY

CUSTOMER I	WORK.NO. I	ITEM.NO. I	USE	ORDER NO.	Q'TY I	SET	SHI MANUF.NO.
▲ X04502G_01		SCALE	DATE	Mar.17.2023	F2CF -UA65-199		
▲		Y.Miura	INSPECTION	Y.Tsurumi	CYCLO DRIVE		
▲			APPROVED	Y.Tsurumi	OUTLINE DRAWING		
REV.▲		Sumitomo Drive Technologies		Sumitomo Heavy Industries, Ltd.	DWG. NO. F Q 9 5 2 5 G		