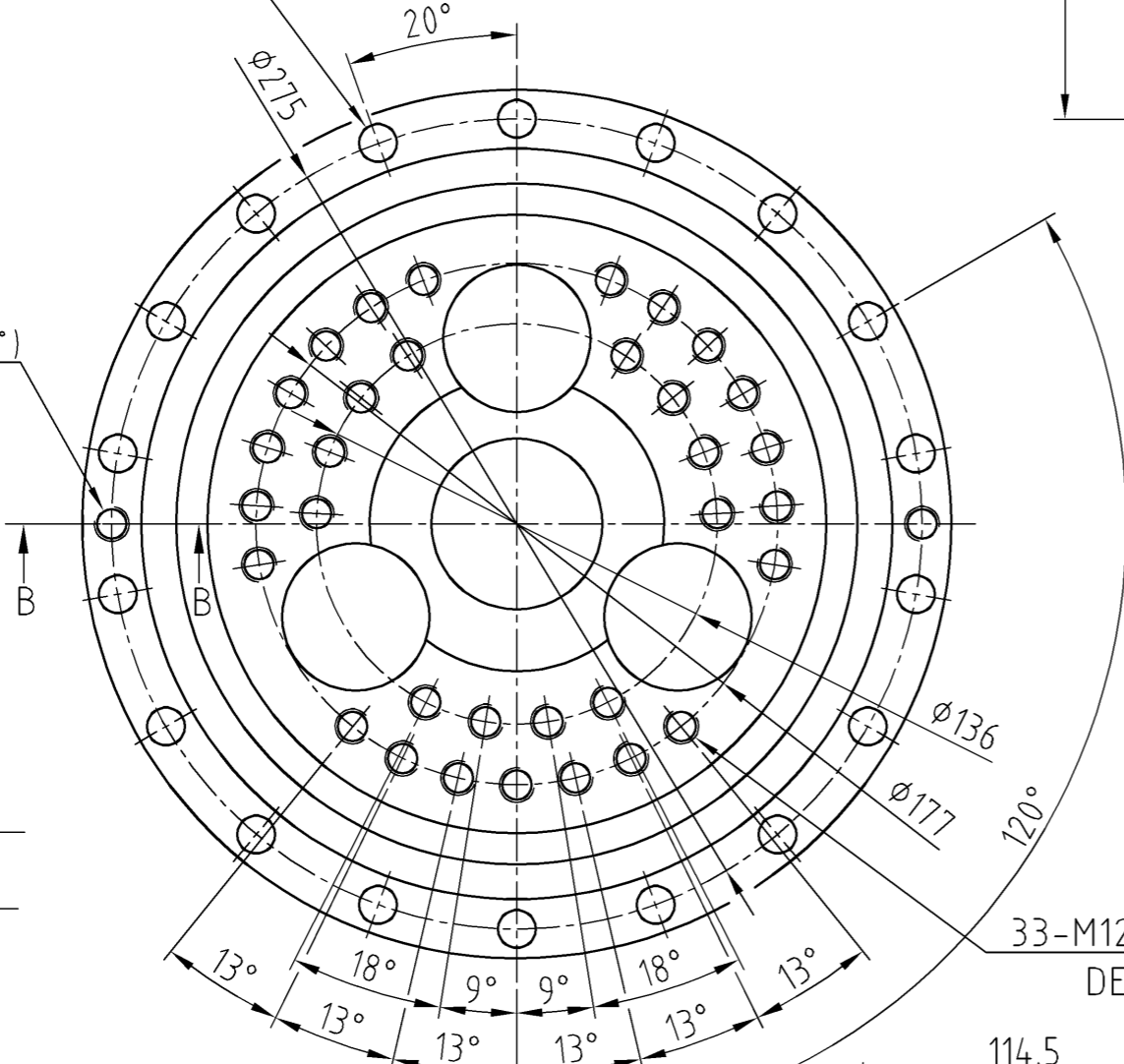
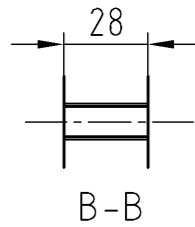


FQ9522G

18-φ13

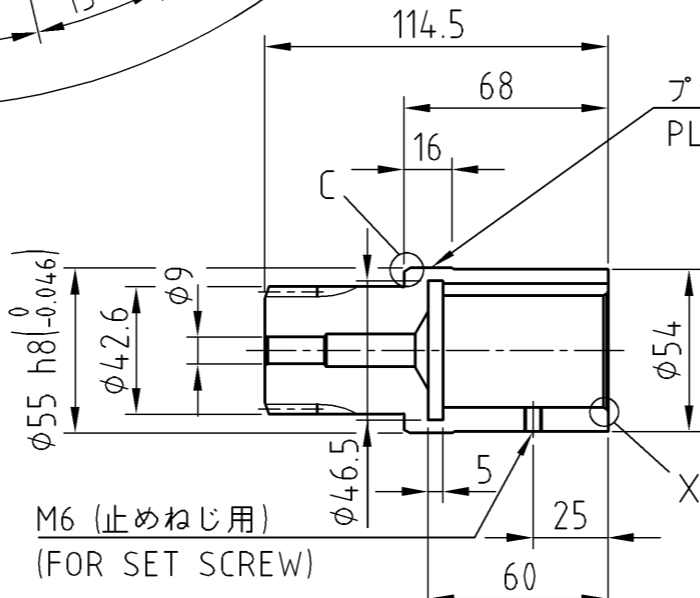
2-M12(抜きタップ)
(FORCING TAP)



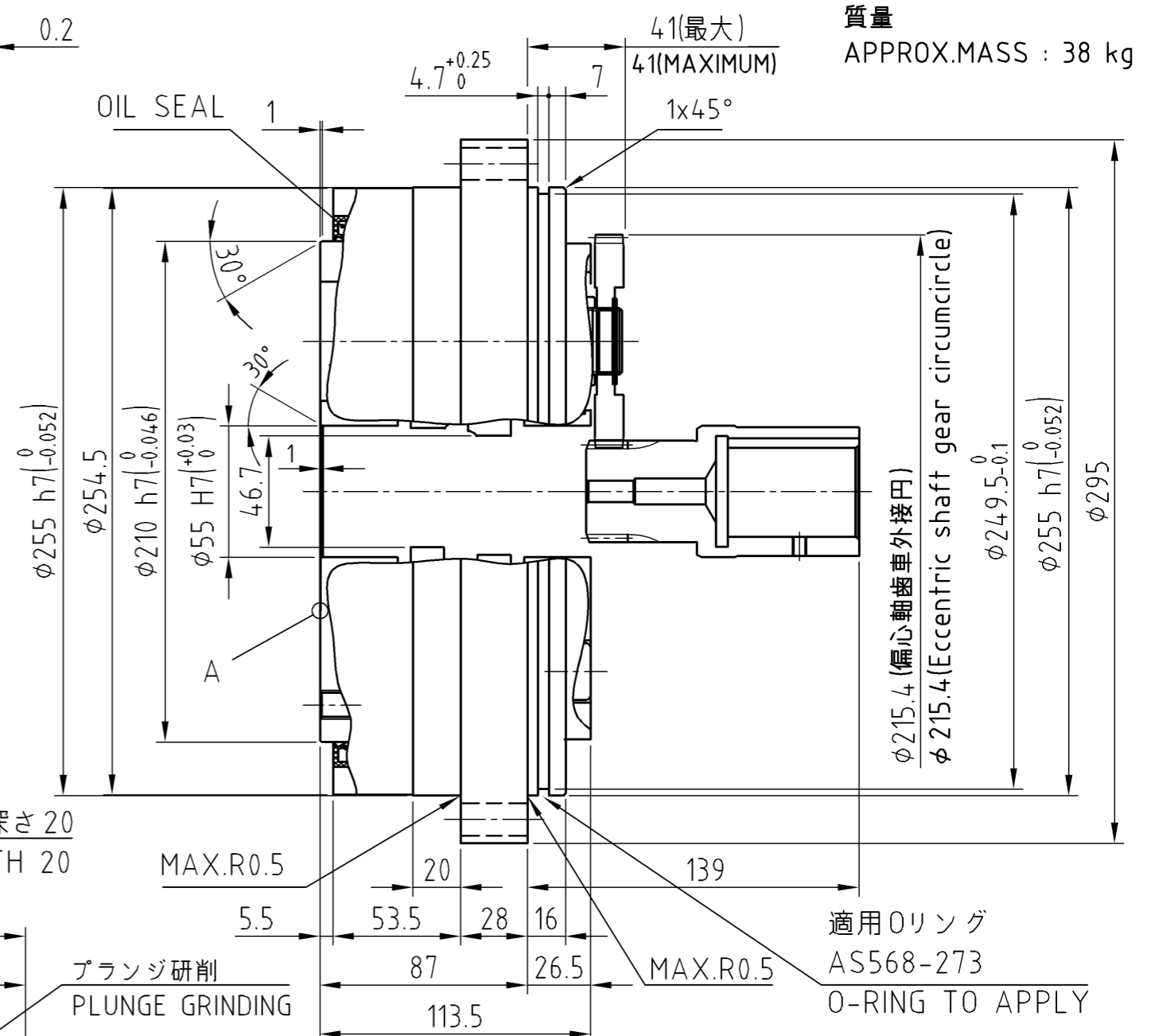
33-M12 深さ 20
DEPTH 20

注意事項:
取付用のボルト、座金、液状パッキン、Oリング及び潤滑用グリースは
お客様にて御用意下さい。

Precautions:
Prepare bolts for mounting, washers, liquid gasket, O-ring,
and grease for lubrication by customers.



入力軸歯車詳細
DETAILS ON THE INPUT SHAFT GEAR



質量
APPROX.MASS : 38 kg

CUSTOMER	WORK.NO.	ITEM.NO.	USE	ORDER NO.	Q'TY	SET	SHI MANUF.NO.
△ X04502G_01		SCALE		DATE Mar.17.2023	F2CF -UA65-121		
△		Y.Miura		INSPECTION Y.Tsurumi	CYCLO DRIVE		
△				APPROVAL Y.Tsurumi	OUTLINE DRAWING		
REV.		Sumitomo Drive Technologies		Sumitomo Heavy Industries, Ltd.	DWG. NO.	F Q 9 5 2 2 G	