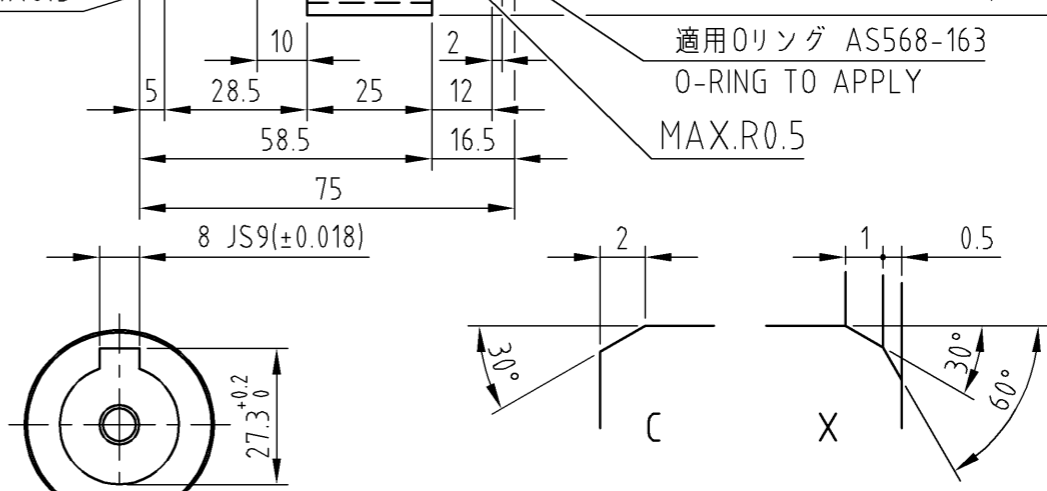
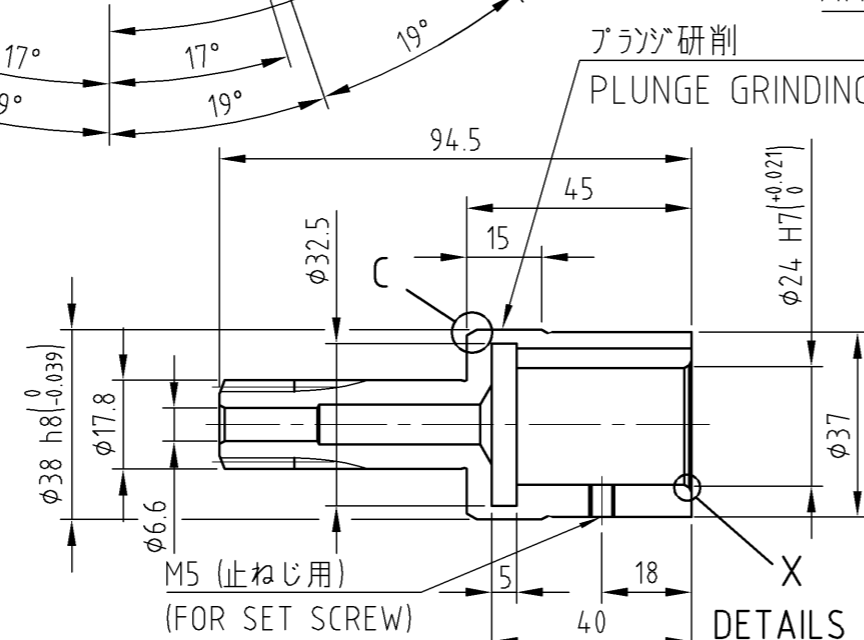
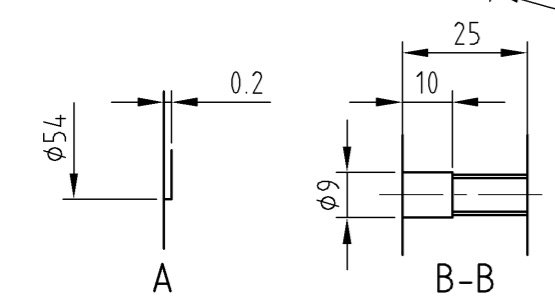
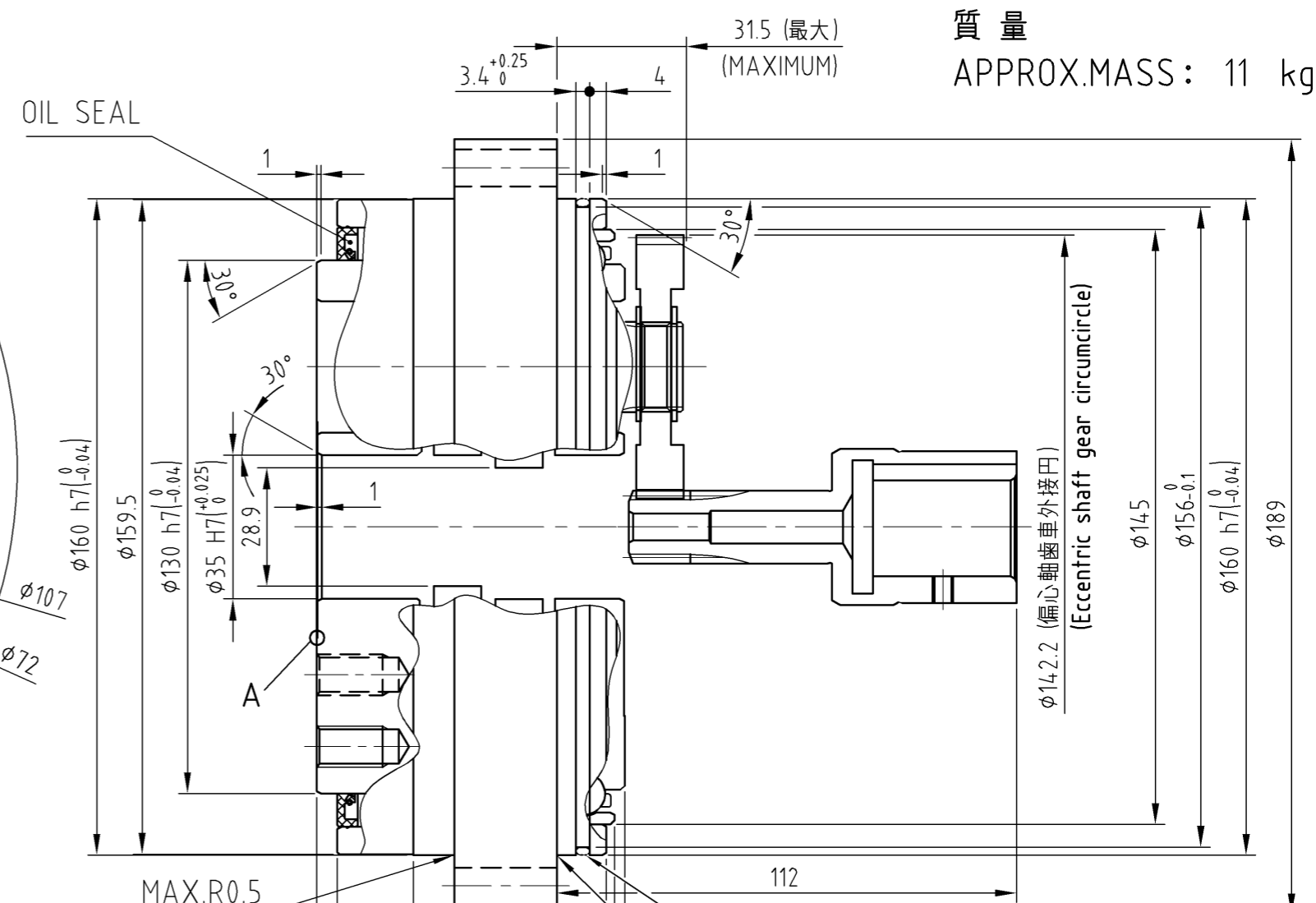
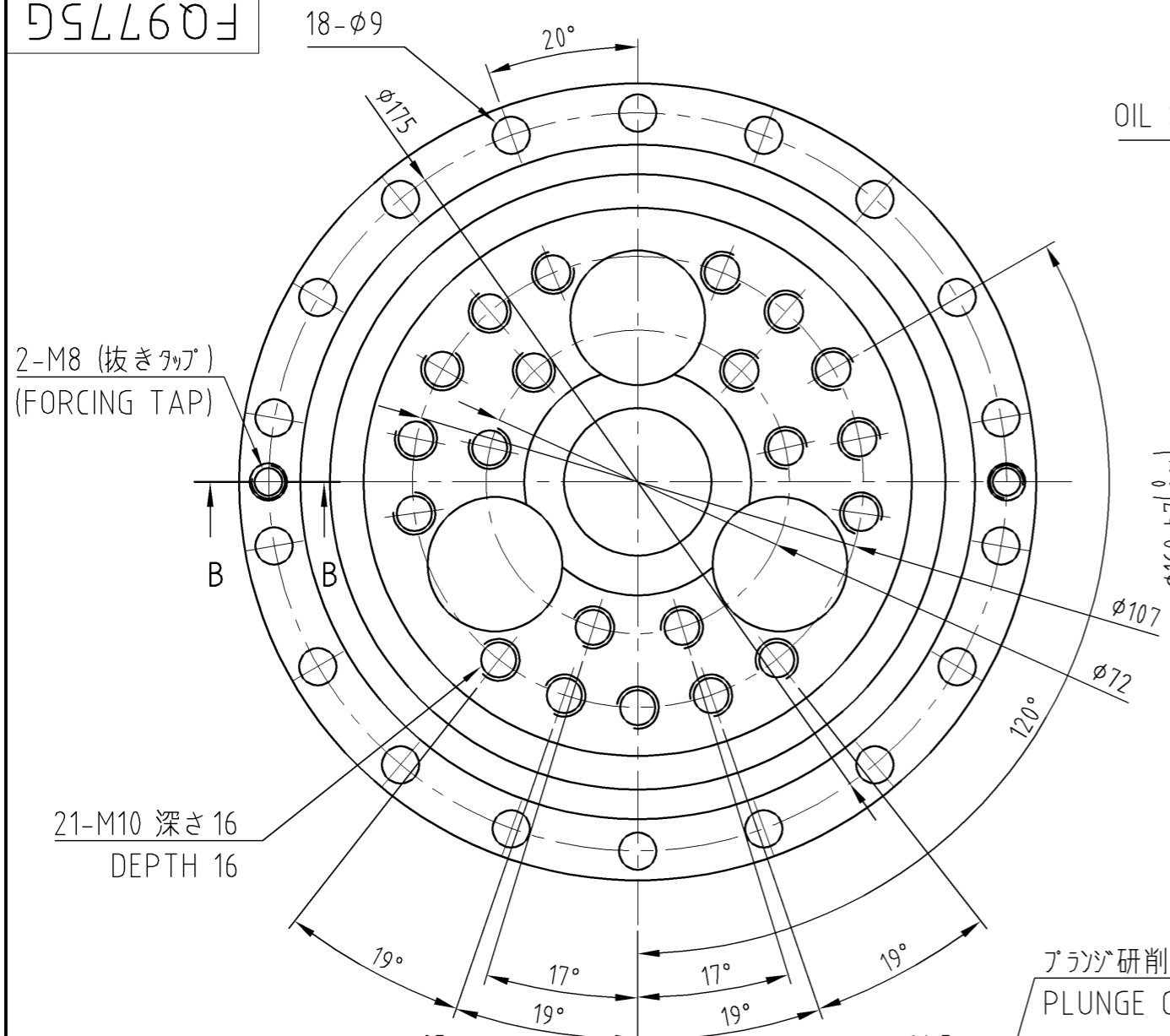


D5L760F
FQ9775G

質量
APPROX.MASS: 11 kg



注意事項：
取付用のボルト、座金、液状パッキン、
Oリング及び潤滑用グリースは、
お客様にて御用意下さい。

Precautions:
Prepare bolts for mounting, washers,
liquid gasket, O-ring, and grease
for lubrication by customers.

CUSTOMER	WORK.NO.	ITEM.NO.	USE	ORDER NO.	Q'TY	SET	SHI MANUF.NO.
▲ X04500G_01		SCALE	DATE	Mar.8.2023	F4CF -UA35-152		
▲		Y.Miura	INSP.	Y.Tsurumi	CYCLO DRIVE		
▲			APPR.	Y.Tsurumi	OUTLINE DRAWING		
REV.▲		Sumitomo Drive Technologies		Sumitomo Heavy Industries, Ltd.	DWG. NO.	F Q 9 7 7 5 G	