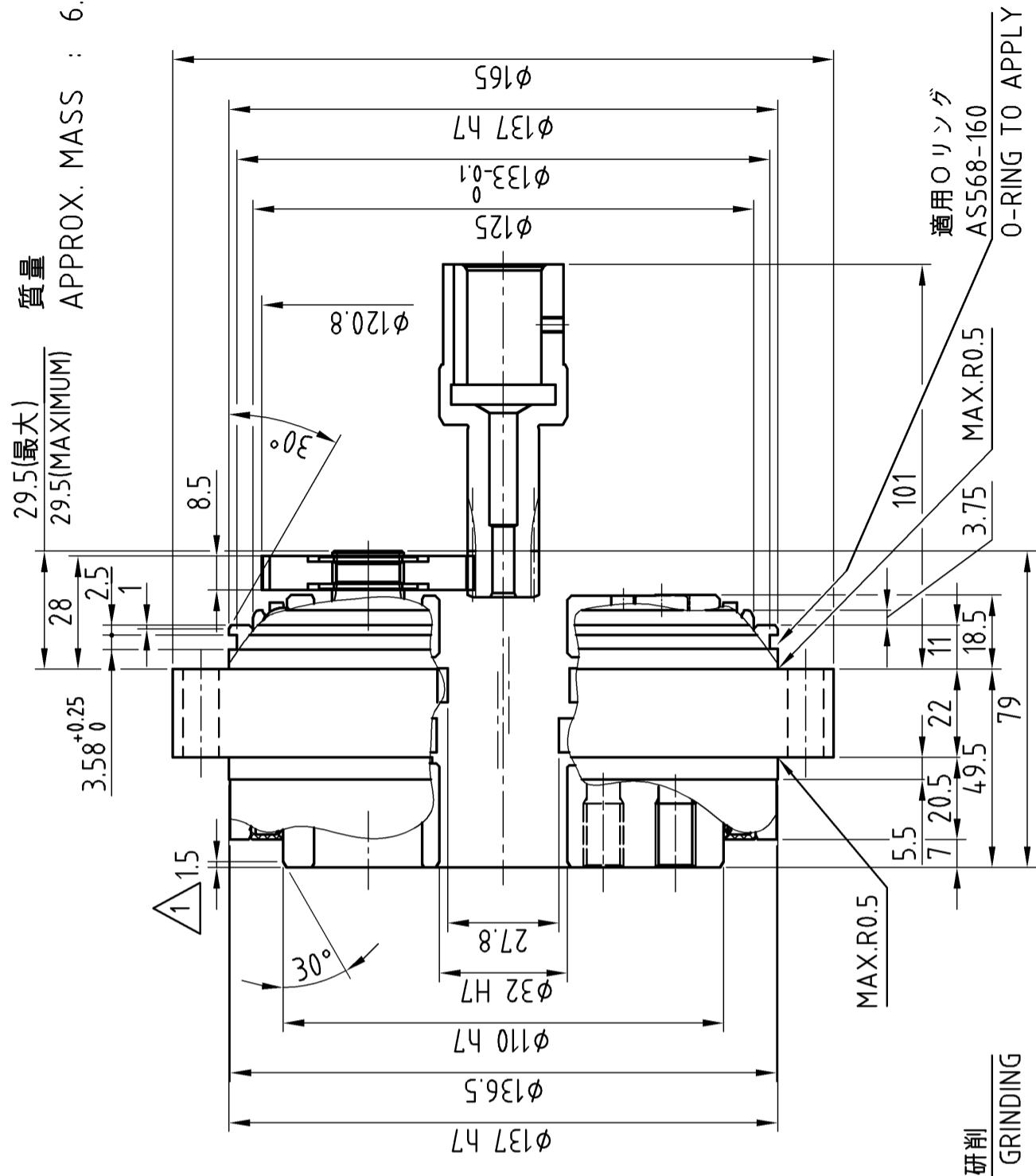


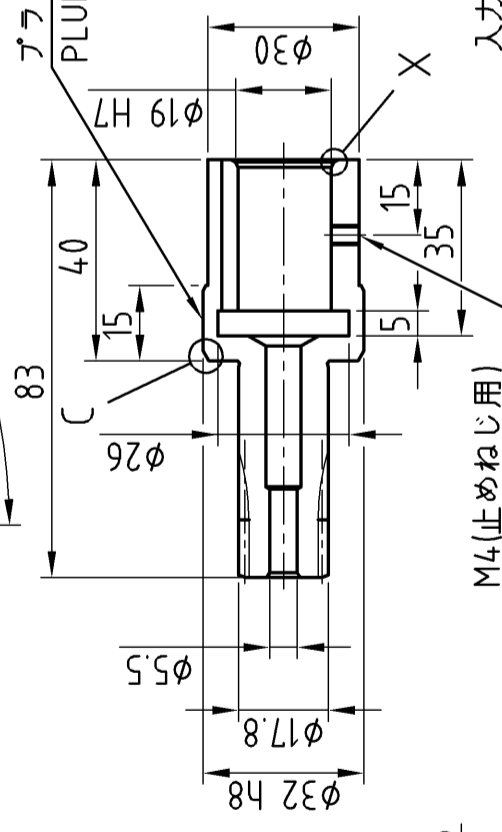
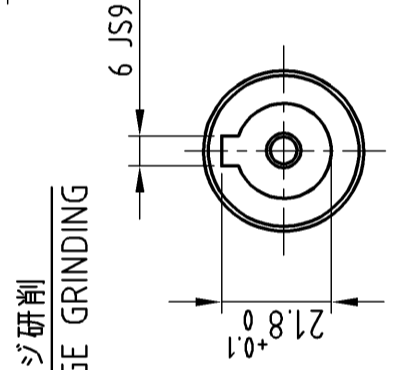
981760F

質量
APPROX. MASS : 6.2 kg

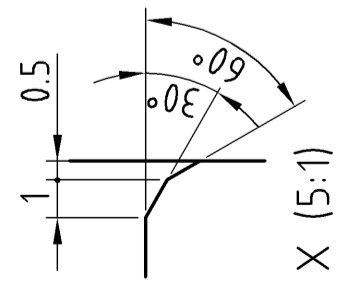
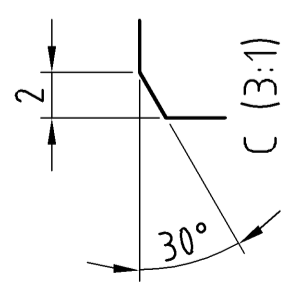
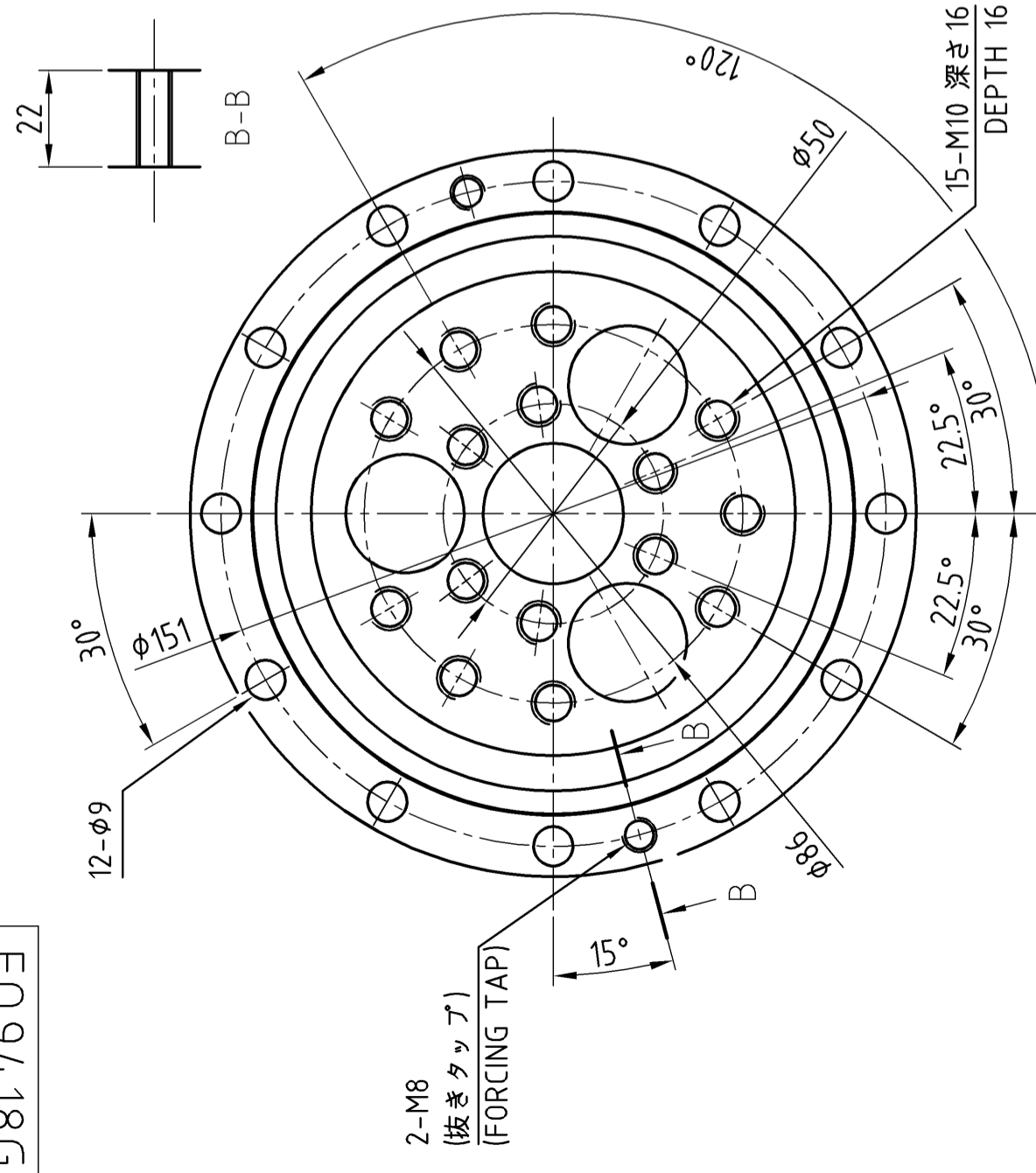


注意事項：
取付用のボルト、座金、液状パッキン、Oリング及び潤滑用グリースはお客様にて御用意下さい。

Precautions:
Prepare bolts for mounting, washers, liquid gasket, O-ring, and grease for lubrication by customers.



入力軸歯車詳細
DETAILS ON THE INPUT SHAFT GEAR



CUSTOMER	WORK.NO.	ITEM.NO.	USE ORDER NO.	Q'TY	SET	SHI
X04499G						MANUF.NO.
SCALE	1:1.5(3:1,5:1)	DATE	2019	F4CF -UA25-124		
INSPECTION	Y.Miura	DATE	2019	CYCLO DRIVE		
APPROVER	Y.Kurosu	DATE	2019	OUTLINE DRAWING		
APPROVER	M.Nakaoka	DATE	2019	DWG. NO.		
REV.1	Correction of errors	Feb.2020	H.Endo	F Q 9 4 1 8 G I		
Sumitomo Drive Technologies ◆ Sumitomo Heavy Industries, Ltd.						