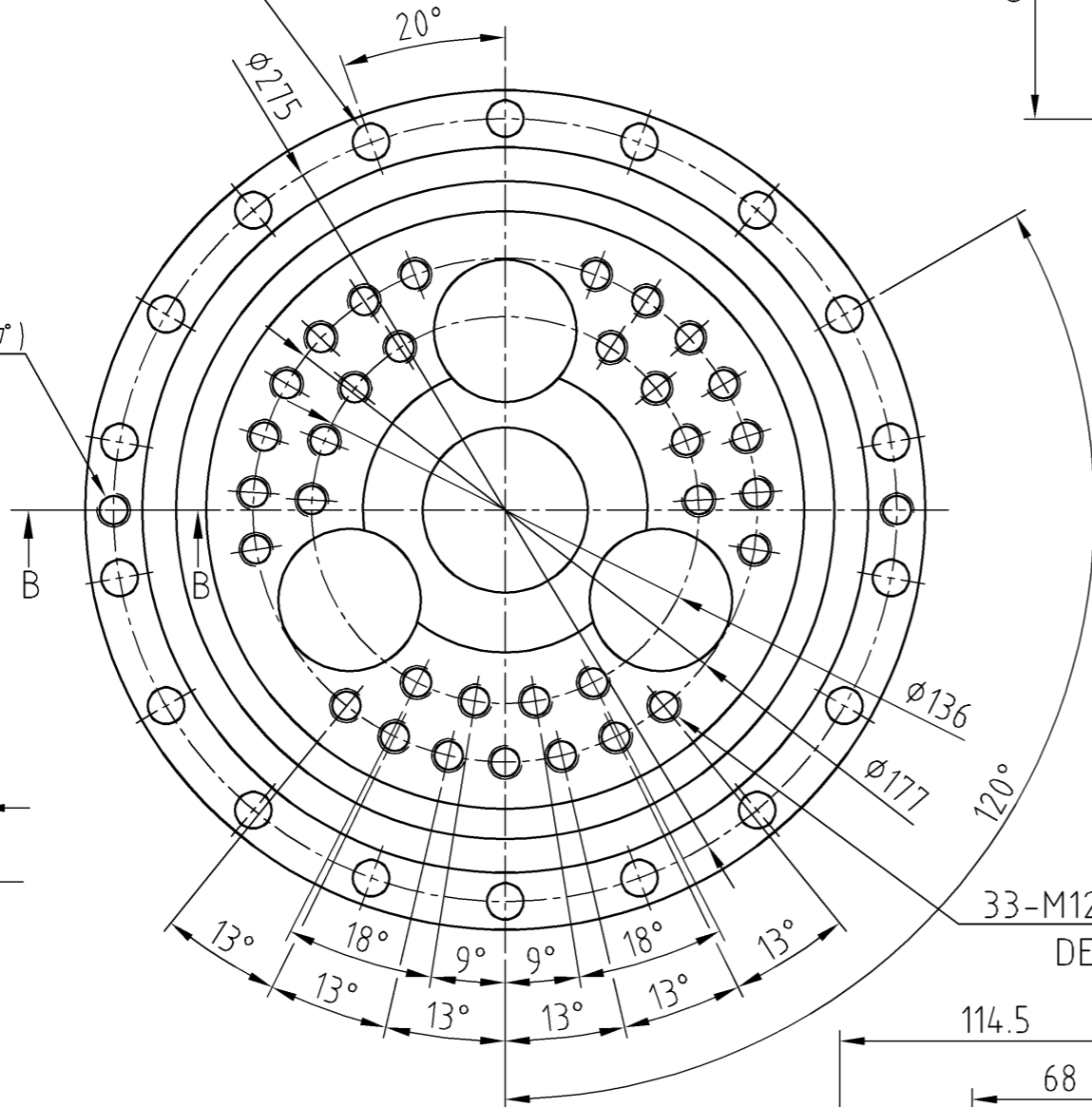
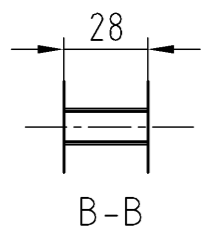


FQ9521G

18-φ13

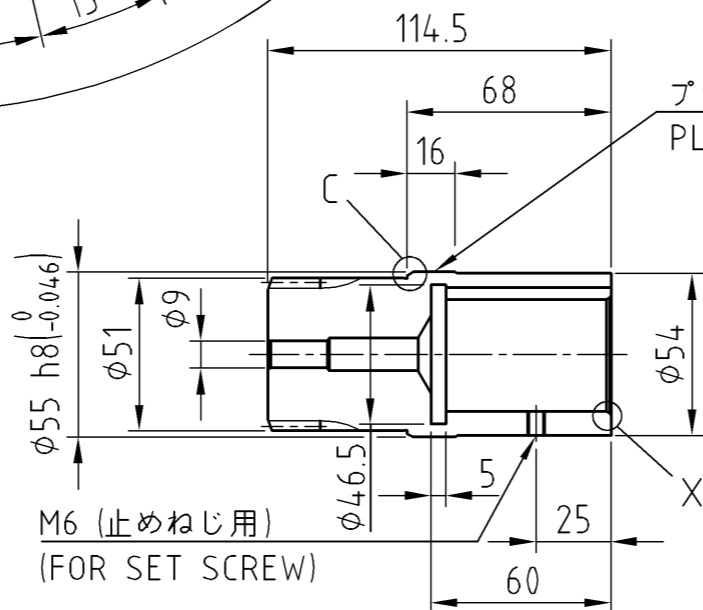
2-M12(抜きタップ)  
(FORCING TAP)



33-M12 深さ 20  
DEPTH 20

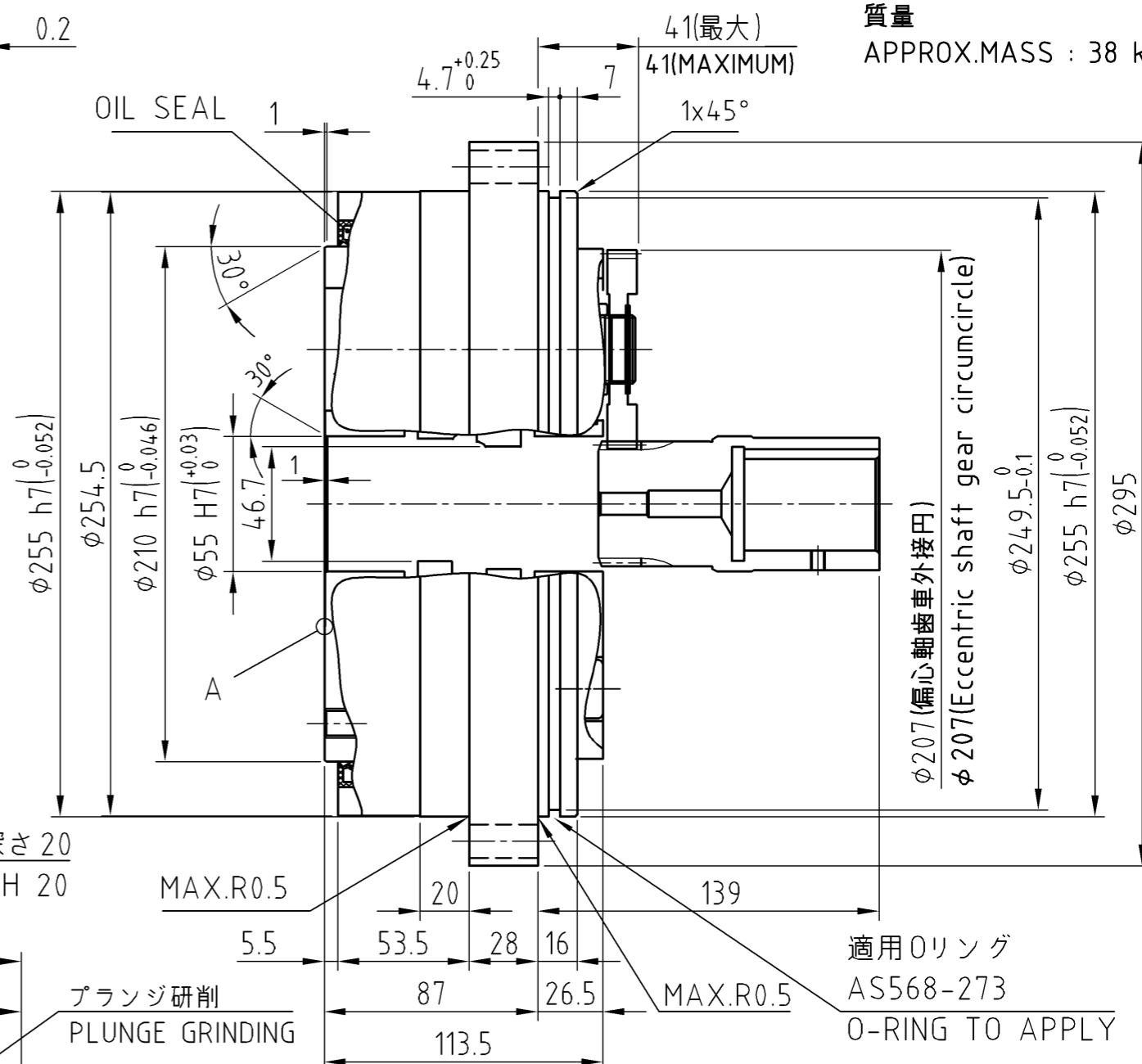
注意事項：  
取付用のボルト、座金、液状パッキン、Oリング及び潤滑用グリースは  
お客様にて御用意下さい。

Precautions：  
Prepare bolts for mounting, washers, liquid gasket, O-ring,  
and grease for lubrication by customers.



プランジ研削  
PLUNGE GRINDING

入力軸歯車詳細  
DETAILS ON THE INPUT SHAFT GEAR



質量  
APPROX.MASS : 38 kg

適用Oリング  
AS568-273  
O-RING TO APPLY

CUSTOMER I	WORK.NO. I	ITEM.NO. I	USE   ORDER NO.	Q'TY I	SET	SHI MANUF.NO.
▲ X04502G_01		SCALE	DATE Mar.17.2023	F2CF -UA65-89		
▲		Y.Miura	INSPE. Y.Tsurumi	CYCLO DRIVE		
▲			APPR. Y.Tsurumi	OUTLINE DRAWING		
REV. ▲		Sumitomo Drive Technologies Sumitomo Heavy Industries, Ltd.		DWG. NO.	F Q 9 5 2 1 G	