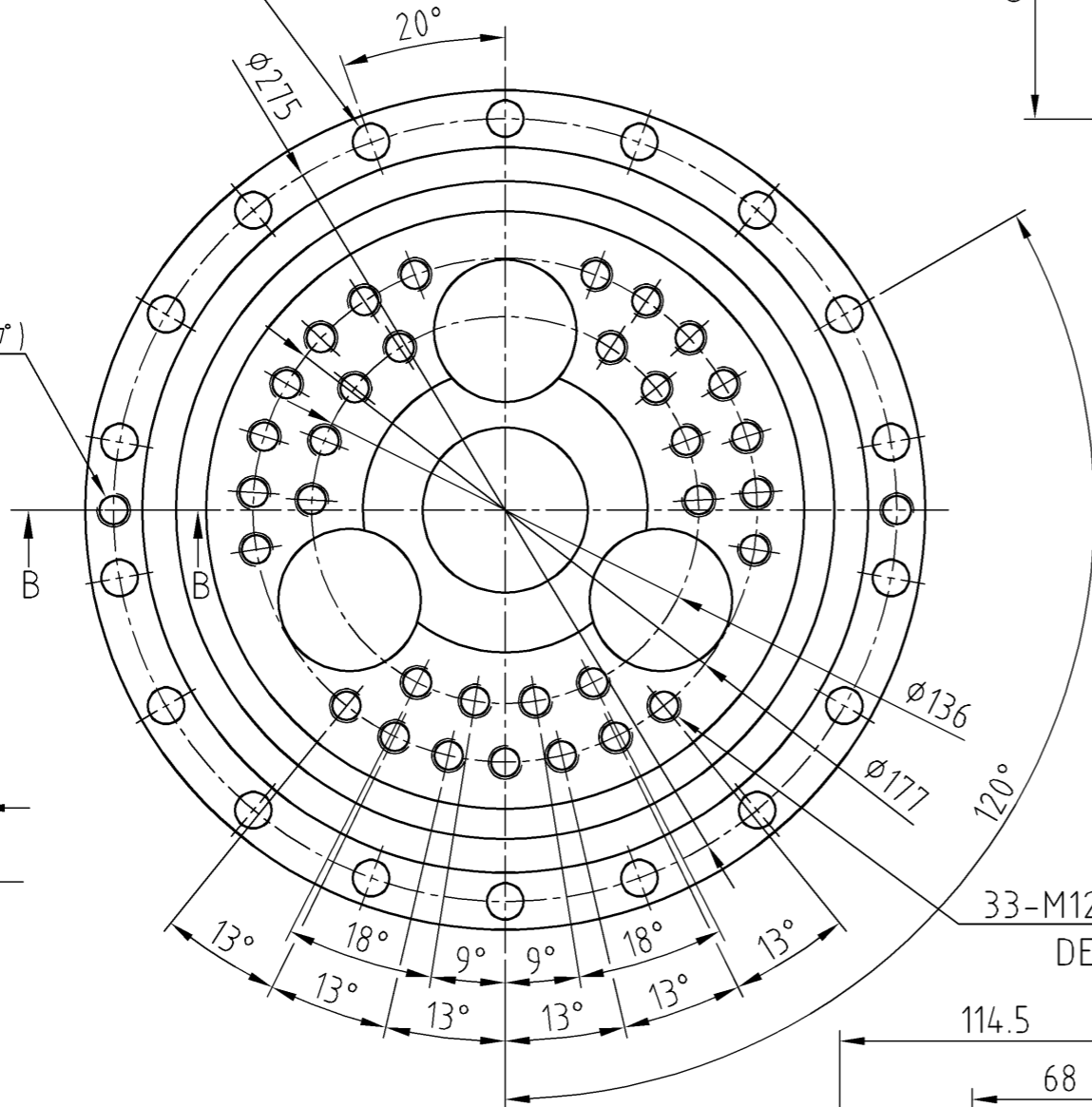
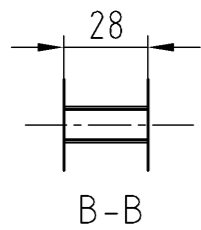


FQ9526G

18-φ13

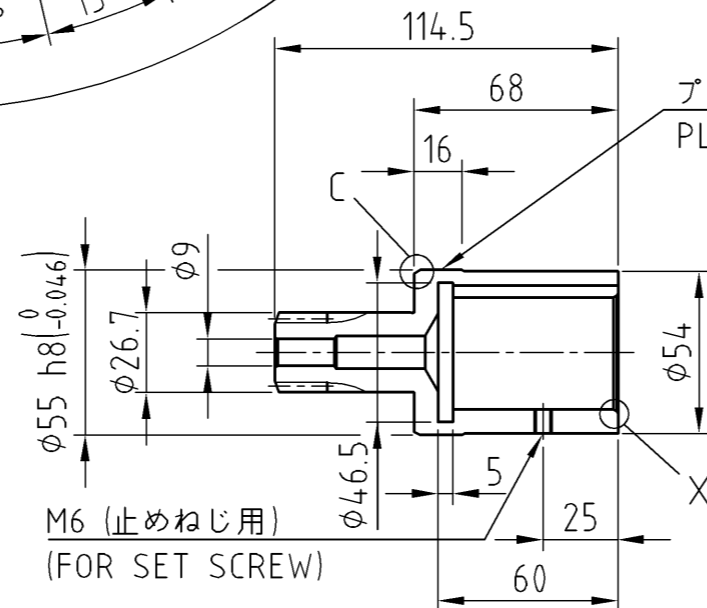
2-M12(抜きタップ)
(FORCING TAP)



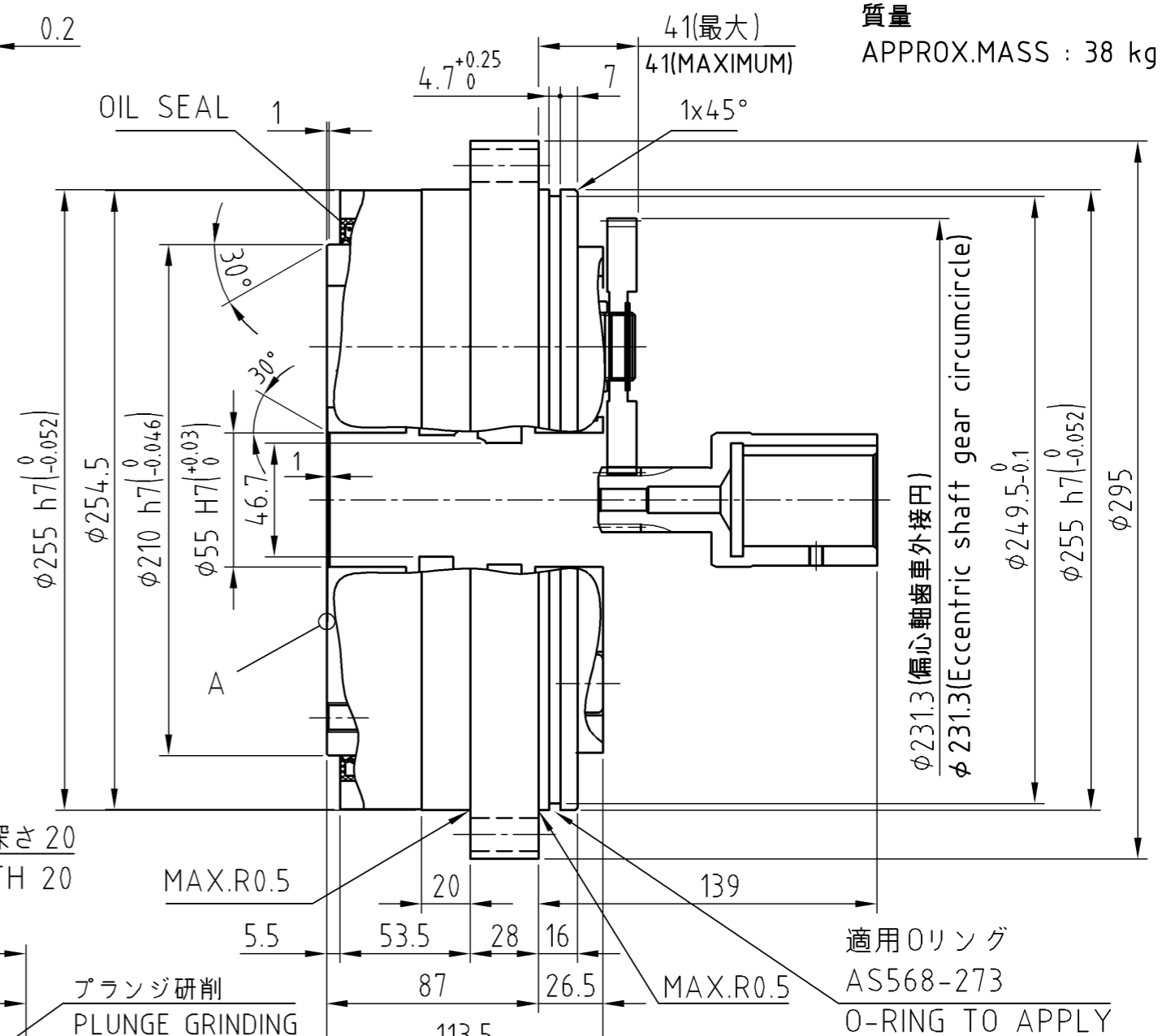
33-M12 深さ 20
DEPTH 20

注意事項：
取付用のボルト、座金、液状パッキン、Oリング及び潤滑用グリースは
お客様にて御用意下さい。

Precautions:
Prepare bolts for mounting, washers, liquid gasket, O-ring,
and grease for lubrication by customers.



入力軸歯車詳細
DETAILS ON THE INPUT SHAFT GEAR



質量
APPROX.MASS : 38 kg

| CUSTOMER | WORK.NO. | ITEM.NO. | USE | ORDER NO. | Q'TY | SET | SHI MANUF.NO. |
|------------|----------|---|-----|----------------------|------------------|-----|---------------|
| X04502G_01 | | SCALE | | DATE Mar.17.2023 | F2CF -UA65-249 | | |
| | | Y.Miura | | INSPECTION Y.Tsurumi | CYCLO DRIVE | | |
| | | | | APPROVAL Y.Tsurumi | OUTLINE DRAWING | | |
| REV. | | Sumitomo Drive Technologies Sumitomo Heavy Industries, Ltd. | | | DWG. NO. FQ9526G | | |